

AMPERES	REFER TO FIG. NO.	DIMENSIONS IN INCHES (mm in parentheses)							
		A ±0.030 (0.76)	B ±0.010 (0.25)	C ±0.010 (0.25)	D ±0.010 (0.25)	E ±0.020 (0.51)	F ±0.020 (0.51)	G ±0.010 (0.25)	H ±0.010 (0.25)
70-250	1	1-5/32 (29.4)	1-7/8 (47.6)	2-3/16 (55.6)	2-21/32 (67.5)	1 (25.4)	0.735 (18.7)	0.327 (8.3)	3/16 (4.8)
300-800	1	1-1/4 (3.8)	1-15/16 (49.2)	2-9/16 (65.1)	3-1/2 (88.9)	1-1/2 (38.1)	0.995 (25.3)	13/32 (10.3)	1/4 (6.35)

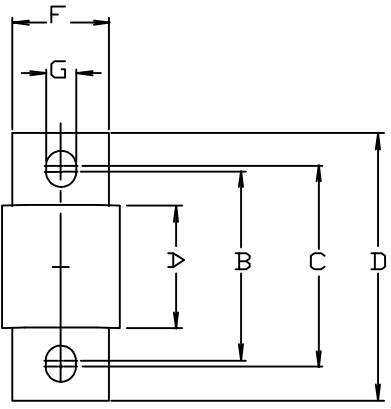
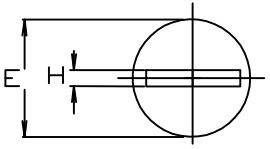


FIG. 1

APPROX. SHIPPING WEIGHT	
70-250A	10 FUSES/1.80 LB.
300-800A	5 FUSES/ 2.7 LB.

UNLESS OTHERWISE SPECIFIED, DIMENSIONS DO NOT INCLUDE PLATING.

- DENOTES CRITICAL CHARACTERISTICS.
- CPK DENOTES CPK DIMENSIONS, -MINIMUM CPK VALUE
- ST DENOTES A CHARACTERISTIC THAT PROVIDES AN INDICATION OF PROCESS PERFORMANCE. PROCEDURE FOR MEASUREMENT AND TRACKING TO BE DEFINED IN LITTELFUSE INSPECTION INSTRUCTIONS.
- CP DENOTES CP DIMENSIONS, -MINIMUM CP VALUE MUST BE WITHIN THE DIMENSIONAL LIMITATIONS SHOWN ON DRAWING AND INITIALLY LOCATED TO ALLOW FOR MAXIMUM TOOL LIFE.

NO		COMPONENT NO	DESCRIPTION	QTY/M	U/M
BILL OF MATERIAL					
MATERIAL SPEC		FINISH			
COPIES TO	DRW	BJJ	DATE	5/2/96	SCALE 1:4
1	9				
2	10				
3	12				
4	13				
5	14				
6	15				
7	16				
8	17				
TOLERANCE UNLESS OTHERWISE SPECIFIED TWO PLACE DEC ±.01 FRACTION ± THREE PLACE DEC ±.005 ANGULAR ±1°					
TITLE					
L17T070 THRU L17T800A					
LITTELFUSE		CHG NO.	OUTLINE		
CHICAGO, ILLINOIS 60631		D	L17T000		

LTR	REVISION	CHK	APPD
B	39385C-REDRAW IN NEW FORMAT 09/01/98 PJM		
C	51411ECP/B-CHG 70-250A DIM "G" 5/04/15 MRY		
D	523141ECP/D-ADD TOLERANCES CHG DIM F 12/22/20 MRY		