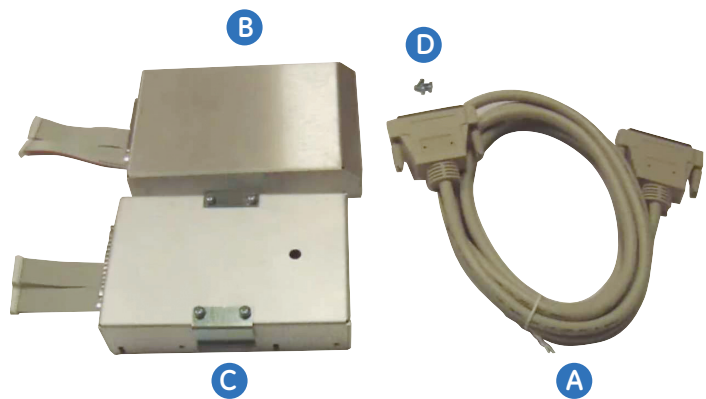


ASTAT-XT[®] Soft Starters Remote keypad installation

85 Amp to 1400 Amp units (QT#0085 to QT#1400)
Product Number: QTAKPADKIT2

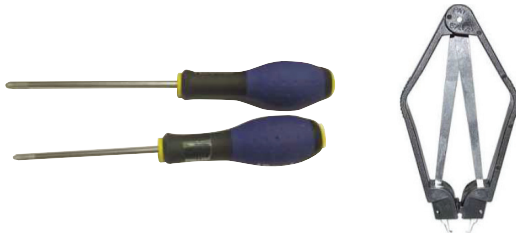
1. Kit components

- A** 3 meters cable with connectors
- B** Soft starter dummy cover
- C** Remote keypad box
- D** Screws M3x8 (4 pieces)



2. Recommended tools

- Philips screw driver 2x125 mm
- Philips screw driver 1x100 mm
- Flat cable connector extractor



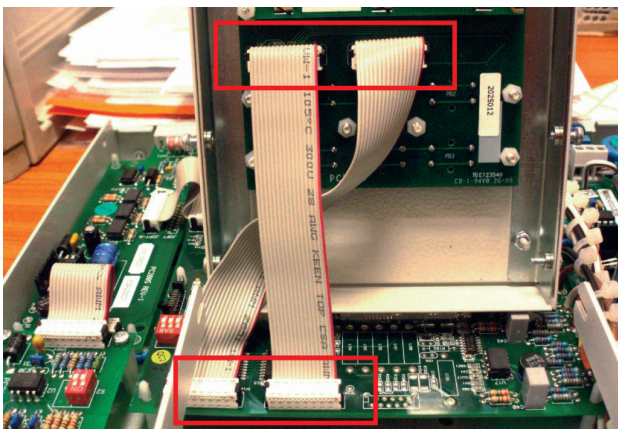
3. Remove 4 screws holding cover of control module.



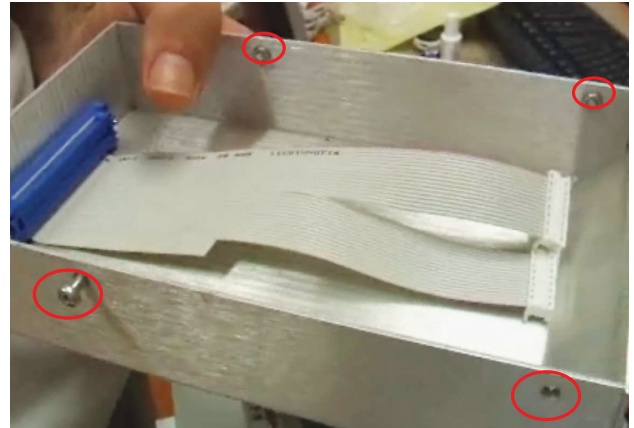
4. Remove 4 screws holding display unit.



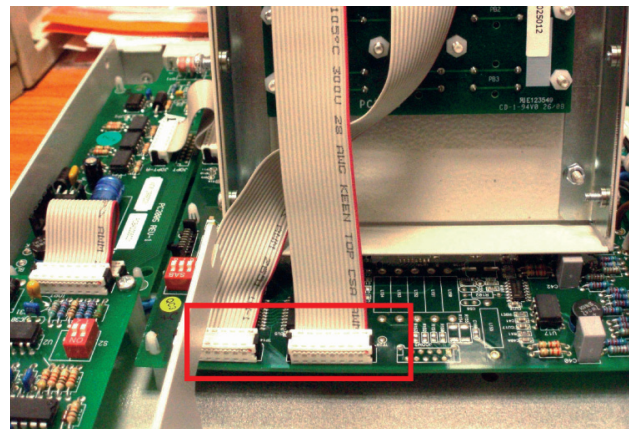
5. Disconnect flat cables from display unit and from main PCB SMDP2000.



6. Insert 4 screws (Item D) into side holes of the dummy cover (Item B). Do not fasten the screws.



7. Connect 2 flat cables from dummy cover to main PCB SMDP2000.

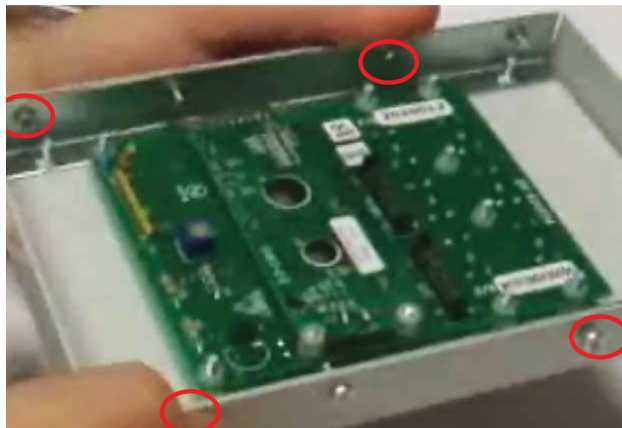


8. Mount the dummy cover and fasten 4 screws.



9. Mount front cover of the control module that was dismantled in Step 3. Fasten 4 screws holding it.

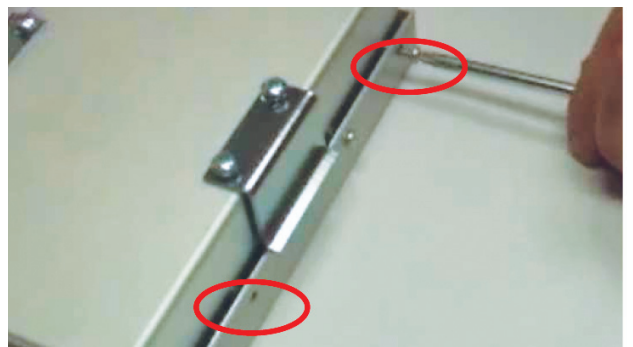
10. Remove 4 screws from side of display unit.



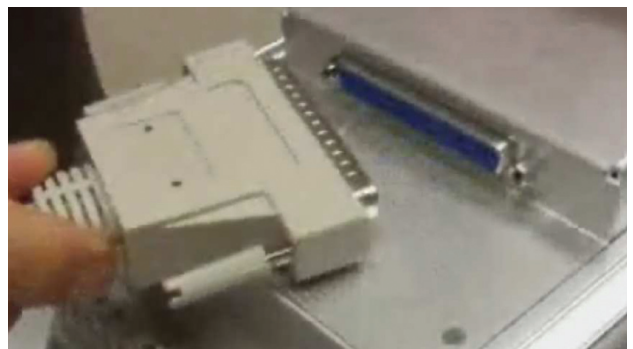
11. Connect 2 flat cables from remote keypad box (Item C) to display unit.



12. Fasten 4 screws that were loosened in Step 10.



13. Install the power module and remote keypad and connect the cable. Connect cable (Item A) between control module and power module.





imagination at work