



Diaphragm Meter Parts List



This comprehensive catalog of diaphragm meter parts for Itron, Inc. contains parts for meters in current production. **All parts information and descriptions in this document are believed to be accurate, but are not guaranteed. Some parts may not be backward compatible with older versions of the product type.** For information about part numbers, descriptions or assemblies in previous models of Sprague, Schlumberger or Actaris meters, contact Itron Support Services at 1-877-487-6602.

This parts list is effective September 2016.

Contents

Meter Top Assembly (Top Casting, IDM, Hubs)	5
Hand Hole Cover	5
IDM Assembly	5
Seal Unit Assembly	5
Drive Dog	5
Meter Castings	5
Gaskets and O-Rings	5
Index Mounting Bracket Assembly	6
Index Covers	6
Indexes	6
Security Seal	6
Seal Cup	6
Valve Covers	7
Diaphragm Assembly	7
Diaphragm Bracket	7
Valve Cover Bearing	7
Valve Seat	7
Carrier Wire Assembly	7
Ceiling Plate	7
Main Shaft Assembly	7
Extension Plate	7
Thrust Bearing	7
Tangent Adjustment Assembly	8
METRIS Center Module	8
Flag Arm Link	8
Gear Shaft, Helical Worm	8
Center Bracket Assembly	8
Retaining Clip	8
METRIS Valve Cover Guides	8
Center Bracket Seal	8
Center Bracket Lower Bearing	8
Outlet Seal	8
Tangent Crank	8
Badges	9
Screws	10
Special Tools	10
Meter Connections	11
10 LT Swivels	11
10 LT Connection Nut	11
10 LT Connection Nut Tin	11

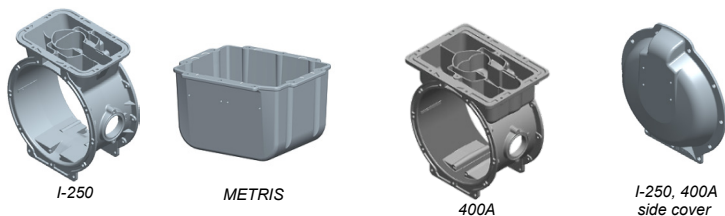
10 LT Connection Nut Washer	11
#1 Sprague/1A Standard Swivels.....	11
#1 Sprague/1A Standard Connection Nut	11
#1 Sprague/1A Standard Connection Nut Washer	11
#1 Sprague/1A Standard Connection Blind Washer.....	11
1-1/4" (1" Pittsburgh) Swivels	12
1-1/4" (1" Pittsburgh) Connection Nut.....	12
1-1/4" (1" Pittsburgh) Connection Nut Washer	12
20 LT Swivels	12
20 LT Connection Nut	12
20 LT Connection Nut Washer	12
20 LT Connection Nut Tin.....	12
30 LT Swivels	13
30 LT Connection Nut	13
30 LT Connection Nut Washer	13
30 LT Connection Nut Tin.....	13
45 LT Swivels	13
45 LT Connection Nut	13
45 LT Connection Nut Washer	13
#3 Sprague (#4) Swivels	14
#3 Sprague (#4) Connection Nut.....	14
#3 Sprague (#4) Connection Nut Washer.....	14
#5 Swivels	14
#5 Connection Nut.....	14
#5 Connection Nut Washer	14
100 LT Swivels	15
100 LT Connection Nut	15
100 LT Connection Nut Washer	15

Meter Top Assembly (Top Casting, IDM, Hubs)



Meter	Part Description	C to C	Part Number
I-250	20 LT	6"	109190
I-250	30 LT	6"	109191
I-250	10 LT	6"	109192
I-250	#1 Sprague/1A Standard	6"	109193
I-250	1-1/4 (1" Pittsburgh)	6"	109194
I-250	ISO G1-1/4 BSP	6"	109195
METRIS	#1 Sprague/1A Standard	6"	091371-002
METRIS	30 LT	6"	091372-002
METRIS	20 LT	6"	091373-002
METRIS	10 LT	6"	091374-002
METRIS	1-1/4 (1" Pittsburgh)	6"	091375-002
METRIS	RM Top with IDM	--	091343
400A	#4 Sprague standard (ft³)	6-25/32"	109390-001
400A	#4 Sprague standard (ft³)	8-1/4"	109394-001
400A	20 LT (ft³)	6-25/32"	109391-001
400A	20 LT (ft³)	8-1/4"	109395-001
400A	30 LT (ft³)	7"	109367-001
400A	30 LT (ft³)	6-25/32"	109392-001
400A	30 LT (ft³)	8-1/4"	109396-001
400A	45 LT (ft³)	6-25/32"	109393-001
400A	45 LT (ft³)	8-1/4"	109397-001
675A	#4 Sprague Standard (ft³)	10"	109620
675A	30 LT (ft³)	10"	109621
675A	45 LT (ft³)	10"	109622
675A, 800A & 1000A	#5 Sprague Standard (ft³)	11"	109600
675A, 800A & 1000A	30 LT (ft³)	11"	109605
675A, 800A & 1000A	45 LT (ft³)	11"	109601
675A, 800A & 1000A	60 LT (ft³)	11"	109602
675A, 800A & 1000A	100 LT (ft³)	11"	109603
675A, 800A & 1000A	ET Top #5 Sprague Standard (ft³)	11"	109641
675A, 800A & 1000A	ET top 30 LT (ft³)	11"	109649
675A, 800A & 1000A	ET top 45 LT (ft³)	11"	109643
675A, 800A & 1000A	ET top 100 LT (ft³)	11"	109651

Meter Castings



Meter	Part Description	Part Number
I-250	Center casting with hand hole cover port	109254-002SU
METRIS	Bottom casting with badge holes	091334-001SU
400A	Center casting	109387SU
400A	Side cover, 25 PSIG MAOP	80002102SU
I-250, 400A	Side cover, 10 PSIG MAOP	109210SU
675A, 800A & 1000A	Center casting	55058102SU
675A, 800A & 1000A	Side cover	550565SU

Hand Hole Cover



Meter	Part Description	Part Number
I-250, METRIS, 400A, 675A, 800A, & 1000A	Hand hole cover	091006SU
I-250, METRIS, 400A, 675A, 800A & 1000A	Hand hole cover, PFM, Pete's plug	091008-007
I-250, METRIS, 400A, 675A, 800A & 1000A	Hand hole cover, PFM, 1/8" pipe plug	091008-008

IDM Assembly



Meter	Part Description	Part Number
I-250	IDM assembly(ft³)	015983
I-250	IDM assembly(m³)	016976
METRIS	IDM assembly	091460
400A	IDM assembly (ft³)	035984
400A	IDM assembly (m³)	035986
675A, 800A & 1000A	IDM for ET top (ft³)	555996
675A, 800A & 1000A	IDM for Standard top (ft³)	555986
675A, 800A & 1000A	IDM for ET top (m³)	555997
675A, 800A & 1000A	IDM for Standard top (m³)	555987
675A, 800A & 1000A	IDM screws	015332
675A, 800A & 1000A	Male drive dog	550555

Seal Unit Assembly



Meter	Part Description	Part Number
I-250, 400A, 675A, 800A & 1000A	Seal unit assembly	010935

Drive Dog



Meter	Part Description	Part Number
I-250, METRIS, 400A	Male	010530
675A, 800A & 1000A	Male	550555

Gaskets and O-Rings



Meter	Part Description	Part Number
I-250	Top casting gasket/Neoprene	065511-001
METRIS	Case gasket	091325
I-250, METRIS, 400A, 675A, 800A & 1000A	Hand-hole O-ring	091007
I-250, 400A	Diaphragm gasket	065270
675A, 800A & 1000A	Diaphragm O-ring	550551
400A	Top gasket	035511
675A, 800A & 1000A	Top gasket	550511

Index Mounting Bracket Assembly



Meter	Part Description	Part Number
675A,800A & 1000A	Index mounting bracket	55045404
675A,800A & 1000A	Index mounting screws for indexes other than 8000027 series	010040-001
675A,800A & 1000A	Index mounting screws for indexes commercial 800027 series	090071



Indexes

Meter	Part Description	Type	Part Number
I-250, METRIS, 400A ¹	Standard 4-circle dial/clock, (ft ³)	NTC	017312
I-250, METRIS, 400A ¹	Standard 4-circle dial/clock, (ft ³)	TC	017316
I-250, METRIS & 400A ¹	Standard 5-digit/direct read odometer (ft ³)	NTC	017321-001
I-250, METRIS & 400A ¹	Standard 4-digit/direct read odometer (ft ³)	NTC	017322-001
I-250, METRIS & 400A ¹	Standard 5-digit/direct read odometer (ft ³)	TC	017323-001
I-250, METRIS & 400A ¹	Standard 4-digit/direct read odometer (ft ³)	TC	017324-001
I-250, METRIS & 400A ³	Standard 5-digit/direct read odometer (m ³)	NTC	017325-001
I-250, METRIS & 400A ³	Standard 5-digit/direct read odometer (m ³)	TC	017326-001
I-250, METRIS & 400A ¹	2 PSI compensating, 4-circle (ft ³)	NTC & TC	017289
I-250, METRIS & 400A ¹	2 PSI compensating, 14.73 PSIA base, 4-circle, (ft ³)	NTC & TC	017289-001
I-250, METRIS & 400A ³	Standard 7-digit direct read, (m ³)	NTC	800027-011
675A,800A & 1000A ²	Standard 5-circle dial (ft ³)	NTC	050556
675A,800A & 1000A ²	Standard 5-digit direct read (ft ³)	NTC	800027-001
675A,800A & 1000A ²	Standard 5-digit direct read (ft ³)	TC	800027-002
675A,800A & 1000A ⁴	Standard 6-digit direct read (m ³)	NTC	800027-003
675A,800A & 1000A ⁴	Standard 6-digit direct read (m ³)	TC	800027-004
675A,800A & 1000A ⁴	Standard 7-digit direct read (m ³)	NTC	800027-012
675A,800A & 1000A ⁴	Standard 7-digit direct read (m ³)	TC	800027-013
675A,800A & 1000A ²	14" compensating 5-circle dial (ft ³)	NTC & TC	048208

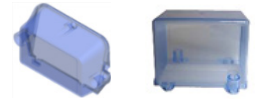
1. Index Test Dials: ½', 2'

2. Index Test Dials: 2 ½', 10'

3. Index Test Dials: 10dm³, 50dm³

4. Index Test Dials: .3m³, .15m³

Index Covers



Meter	Part Description	Part Number
I-250, METRIS & 400A	Standard index cover with boss and RTV	016610
I-250, METRIS & 400A	Index cover without boss and RTV	015619
675A, 800A & 1000A	Index cover with RTV	80006001

Security Seal



Meter	Part Description	Location	Part Number
I-250, METRIS, 400A, 675A, 800A & 1000A	Security seal cap (red)	Hand hole cover and index	017167
I-250, METRIS, 400A	Security seal cap (red)	Case	017156
675A, 800A & 1000A	Security seal cap (red)	Case	017152

Seal Cup



Meter	Part Description	Location	Part Number
I-250, METRIS, 400A, 675A, 800A & 1000A	Seal cup	Hand hole cover and index	091061
I-250, METRIS, 400A	Seal cup	Case	017155
675A, 800A & 1000A	Seal cup	Case	017151

Valve Covers



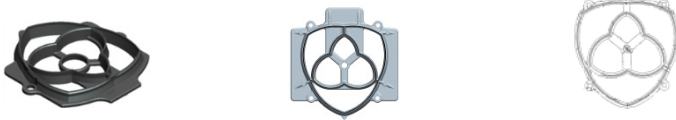
Meter	Part Description	Part Number
I-250	Valve cover, lapped	067336-002
METRIS	Valve cover METRIS, rear (lapped)	091040
METRIS	Valve cover METRIS, front (lapped)	091041
400A	Valve cover 400A (lapped) <i>Also Order: Valve Cover Bearing p/n 010372</i>	037345
675A & 800A	Valve cover 675A & 800A (lapped)	557331
1000A	Valve cover 1000A (lapped)	550333

Valve Cover Bearing



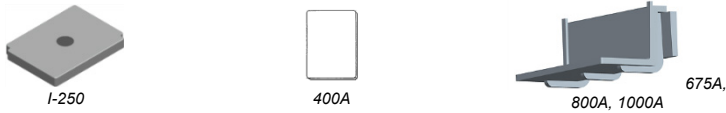
Meter	Part Description	Part Number
I-250	Valve Cover/main shaft bearing	010372-001
400A	Valve cover/main shaft bearing	010372
675A, 800A, 1000A	Valve cover/main shaft bearing	040375

Valve Seat



Meter	Part Description	Part Number
I-250	Valve seat (lapped)	066044
400A	Valve seat	036045
675A & 800A	Valve seat (with bearing)	556031
1000A	Valve seat (with bearing)	556032

Ceiling Plate



Meter	Part Description	Part Number
I-250	Ceiling plate	010026-001
400A	Ceiling plate	030026
675A, 800A & 1000A	Ceiling plate	550423

Extension Plate



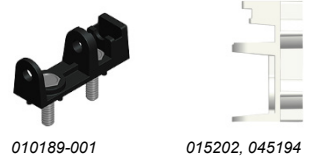
Meter	Part Description	Part Number
675A, 800A, 1000A	Extension plate	550561

Diaphragm Assembly



Meter	Part Description	Part Number
I-250, 400A	Diaphragm Assembly <i>Also order: hex nut part number 010820 (2)</i>	060238
675A, 800A & 1000A	Diaphragm assembly <i>Also order: hex nut part number 110180 (2)</i>	550230

Diaphragm Bracket



Meter	Part Description	Part Number
I-250	Diaphragm bracket	010189-001
400A	Diaphragm bracket <i>Also order: E-Ring part number 010172</i>	015202
675A, 800A & 1000A	Diaphragm bracket <i>Also order: E-Ring part number 010175</i>	045194

Carrier Wire Assembly



Meter	Part Description	Part Number
I-250, 400A	Carrier wire assembly <i>Also order: wire screw part number 010168</i>	070176
675A, 800A & 1000A	Carrier wire bracket assembly <i>Also order: wire screw part number 010040 (2)</i>	550142

Main Shaft Assembly



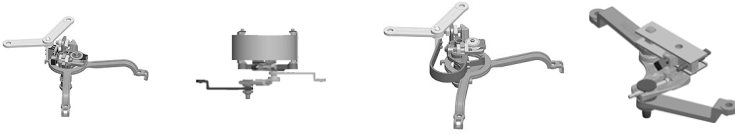
Meter	Part Description	Part Number
I-250	Main shaft	060963-001
400A	Main shaft <i>Also order: thrust bearing (060087)</i>	030095
675A, 800A & 1000A	Main shaft assembly (NTC)	550959
675A, 800A & 1000A	Main shaft assembly (TC)	550958

Thrust Bearing



Meter	Part Description	Part Number
I-250, 400A	Main shaft/center bracket seal assembly interface	060087

Tangent Adjustment Assembly



Meter	Part Description	Type	Units	Part Number
METRIS	Tangent adjustment assembly	NTC	ft ³	091274
METRIS	Tangent adjustment assembly	TC	ft ³	091275
METRIS	Tangent adjustment assembly, reverse stop	NTC	m ³	091276
METRIS	Tangent adjustment assembly	NTC	m ³	091281
METRIS	Tangent adjustment assembly	TC	m ³	091282
I-250, 400A	Adjustment assembly	NTC	ft ³ & m ³	090250
I-250, 400A	Adjustment assembly	TC	ft ³ & m ³	090252
675A, 800A & 1000A	Adjustment assembly	NTC	ft ³ & m ³	045969
675A, 800A & 1000A	Adjustment assembly	TC	ft ³ & m ³	047978

Center Bracket Assembly



Meter	Part Description	Part Number
675A, 800A & 1000A	Center bracket assembly	550938
I-250, 400A	Center bracket	010065
	<i>Also order:</i>	
	<i>Center bracket bearing boot seal</i>	010389 060490

Center Bracket Seal



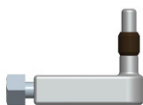
Meter	Part Description	Part Number
I-250, 400A	Center bracket seal assembly	060490

Center Bracket Lower Bearing



Meter	Part Description	Part Number
I-250, 400A	Center bracket lower bearing	010389

Tangent Crank



Meter	Part Description	Part Number
675A & 800A	Tangent crank	550904
1000A	Tangent crank	550902

METRIS Center Module



Meter	Part Description	Part Number
METRIS	Module NTC (ft ³)	091201-001
METRIS	Module TC (ft ³)	091203-001
METRIS	Module NTC (m ³)	091205-001
METRIS	Module NTC (m ³) reverse stop	091206-001
METRIS	Module TC (m ³)	091207-001
METRIS	Module NTC ft ³ , reverse stop	091208-001

Flag Arm Link



Meter	Part Description	Part Number
METRIS	Flag arm link	091025-001

Gear Shaft, Helical Worm



Meter	Part Description	Part Number
METRIS	Gear shaft, helical worm	091045-001
METRIS	Gear shaft, helical worm, metric	091135-001

Retaining Clip



Meter	Part Description	Part Number
METRIS	Retaining clip	091053

METRIS Valve Cover Guides



Meter	Part Description	Part Number
METRIS	METRIS Valve cover guides	091044

Outlet Seal



Meter	Part Description	Part Number
METRIS	Outlet seal	091054

Badges



Meter	Part Description	Type	Part Number
I-250	Standard, 5 PSIG MAOP	NTC (ft ³)	017788-001
I-250	Standard, 5 PSIG MAOP	TC (ft ³)	017789-001
I-250	10 PSIG MAOP	NTC (ft ³)	017659-001
I-250	10 PSIG MAOP	TC (ft ³)	017658-001
I-250	35 kPa MAOP	NTC (m ³)	017824-001
I-250	35 kPa MAOP	TC (m ³)	017826-001
I-250	69 kPa MAOP	NTC (m ³)	017661-001
I-250	69 kPa MAOP	TC (m ³)	017660-001
METRIS	Standard, 5 PSIG MAOP	NTC (ft ³)	091055
METRIS	Standard, 5 PSIG MAOP	TC (ft ³)	091056
METRIS	10 PSIG MAOP	NTC (ft ³)	091414
METRIS	10 PSIG MAOP	TC (ft ³)	091415
METRIS	35 kPa MAOP	TC (m ³)	091130
METRIS	35 kPa MAOP	NTC (m ³)	091131
400A	Standard, 10 PSIG MAOP	NTC (ft ³)	037778
400A	Standard, 10 PSIG MAOP	TC (ft ³)	037824
400A	25 PSIG MAOP	NTC (ft ³)	037776
400A	25 PSIG MAOP	TC (ft ³)	037825
400A	69 kPa MAOP	NTC (m ³)	037820
400A	69 kPa MAOP	TC (m ³)	037826
400A	25 PSIG MAOP	NTC (m ³)	037822
675A	25 PSIG MAOP	NTC (ft ³)	037196
675A	25 PSIG MAOP	TC (ft ³)	037197
675A	172 kPa MAOP	NTC (m ³)	037198
675A	172 kPa MAOP	TC (m ³)	037199
800A	25 PSIG MAOP	NTC (ft ³)	047196
800A	25 PSIG MAOP	TC (ft ³)	047197
800A	172 kPa MAOP	NTC (m ³)	047198
800A	172 kPa MAOP	TC (m ³)	047199
1000A	25 PSIG MAOP	NTC (ft ³)	057196
1000A	25 PSIG MAOP	TC (ft ³)	057197
1000A	172 kPa MAOP	NTC (m ³)	057198
1000A	172 kPa MAOP	TC (m ³)	057199
I-250, METRIS, 400A, 675A, 800A & 1000A	Blank aluminum badge	N/A	017034
METRIS, 400A, 675A, 800A & 1000A	Aluminum embossed badge	N/A	017034EMB

Screws



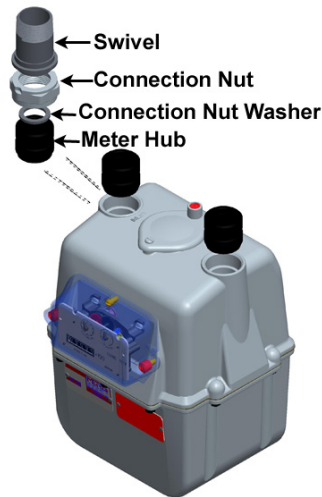
Meter	Part Description	Location	Quantity	Part Number
I-250	1/4-20 x 5/8 Hex head	Case screws, top casting, side covers	30	010323-002
I-250	6-32 Hex nut	Diaphragm bracket	2	010820-001
I-250, METRIS, 400A, 675A, 800A & 1000A	10-24 x 1/2 Slotted pan head	Hand hole cover	2	091096
I-250, METRIS, 400A, 675A, 800A & 1000A	Rivet 1/8 x 0.254	Badge	2	091444
METRIS	1/4-20 x 3/4 Hex head	Case	10	755304-001
I-250, METRIS, 400A	Index, valve seat, and carrier wire		2	010622-001
I-250, METRIS, 400A	10-24 x 5/8 cross-slotted	Standard index cover	3	010625-002
I-250, METRIS, 400A	10-24 x .775 cross-slotted	Itron AMR index cover	2	010626-002
I-250, METRIS, 400A	Drilled head for seal wires on standard meters		2	010627-002
I-250, METRIS, 400A	10-24 x 3/8 Fillister Head index mounting screw	Index	2	010040-002
400A	10-24 x 3/8 Fillister head	Valve seat	2	010040-002
400A	1/4-20 x 3/4 Hex head	Top case	8	755304-001
400A	1/4-20 x 5/8 Wash face	Side cover	22	010323-002
I-250, 675A, 800A & 1000A	1/4-20 x 5/8 Soc head cap screw	Valve seat	4	091103-001
675A, 800A & 1000A	5/16-18 x 3/4 Hex head	Top case	18	040320-001
675A, 800A & 1000A	5/16-18 x 1 HD Head screw	Side cover	30	550321-001
I-250, 400A, 675A, 800A & 1000A	10-24 x 7/16 Wash head SLF TP	IDM housing	2	015332-001
675A, 800A & 1000A	1/4-20 x 1/2 Hex head slotted	Index cover	4	010320-001
675A, 800A & 1000A	10-24 x 3/8 Fillister head	Index mounting bracket	2	010040-002
675A, 800A & 1000A	6-32 x 1 TRI RNDLR taptite	Index mounting screw for direct read indexes	2	090071
675A, 800A & 1000A	10-24 x 3/8 Fillister head	Index mounting screw for dial indexes	2	010040-002
675A, 800A & 1000A	1/4-20 x 1/2 Hex head slotted	Index bracket screw for Standard and ET top	2	010320-001
675A, 800A & 1000A	1/4-20 x .375 Fillister head	Index bracket screw for Itron adapter plate	2	550622-001

Special Tools

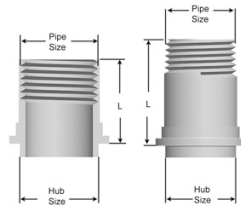


Tool Part Number	Tool Description
012700	METRIS proving wrench
80003601	I-250, 400A proving wrench
550430	Commercial proving wrench
012253	IDM tool for METRIS, I-250, 400A, 675A, 800A, 1000A
091600-001	METRIS proving platform
80010930	Prover Plug

Meter Connections



10 LT Swivels



Part Number	Part Description
013322	10 LT x 3/4M galvanized swivel
013324	10 LT x 3/4M galvanized swivel with plug
013243	10 LT x 3/4M galvanized, insulated swivel

10 LT Connection Nut



Part Number	Part Description
013409	10 LT galvanized connection nut

10 LT Connection Nut Tin



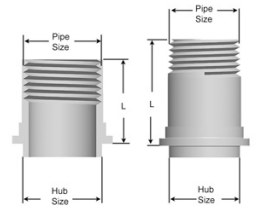
Part Number	Part Description
010642	10 LT connection nut tin

10 LT Connection Nut Washer



Part Number	Part Description
015660	10 LT connection nut washer

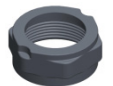
#1 Sprague/1A Standard Swivels



Part Number	Part Description
013110	#1 Sprague/1A Standard x 1M M.I.* black swivel
013132	#1 Sprague/1A Standard x 1M black swivel with plug
013247	#1 Sprague/1A Standard x 1M black, insulated swivel
013147	#1 Sprague/1A Standard x 1M black insulated swivel with plug
013111	#1 Sprague/1A Standard x 1M galvanized swivel
013129	#1 Sprague/1A Standard x 1M galvanized swivel with plug
013223	#1 Sprague/1A Standard x 1M galvanized, insulated swivel
013145	#1 Sprague/1A Standard x 1M galvanized, insulated swivel with plug
013107	#1 Sprague/1A Standard x 3/4F galvanized swivel
013205	#1 Sprague/1A Standard x 3/4F galvanized, insulated swivel
013215	#1 Sprague/1A Standard x 3/4M galvanized, insulated swivel
013114	#1/1A Standard x 3/4M M.I.* black swivel

*malleable iron

#1 Sprague/1A Standard Connection Nut



Part Number	Part Description
010692	#1 Sprague/1A Standard black connection nut
013403	#1 Sprague/1A Standard galvanized connection nut

#1 Sprague/1A Standard Connection Nut Washer



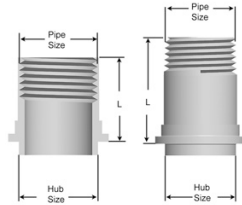
Part Number	Part Description
015650	#1 Sprague/1A Standard connection nut washer

#1 Sprague/1A Standard Connection Blind Washer



Part Number	Part Description
015648	#1 Sprague/1A Standard blind washer

1-1/4" (1" Pittsburgh) Swivels



(same as 1A swivels)

Part Number	Part Description
013110	#1 Sprague/1A Standard x 1M M.I.* black swivel
013132	#1 Sprague/1A Standard x 1M black swivel with plug
013247	#1 Sprague/1A Standard x 1M black, insulated swivel
013147	#1 Sprague/1A Standard x 1M black insulated swivel with plug
013111	#1 Sprague/1A Standard x 1M galvanized swivel
013129	#1 Sprague/1A Standard x 1M galvanized swivel with plug
013223	#1 Sprague/1A Standard x 1M galvanized, insulated swivel
013145	#1 Sprague/1A Standard x 1M galvanized, insulated swivel with plug
013107	#1 Sprague/1A Standard x 3/4F galvanized swivel
013205	#1 Sprague/1A Standard x 3/4F galvanized, insulated swivel
013215	#1 Sprague/1A Standard x 3/4M galvanized, insulated swivel

1-1/4" (1" Pittsburgh) Connection Nut



Part Number	Part Description
013412	1-1/4" black connection nut
013414	1-1/4" galvanized connection nut
013402	1-1/4" plated connection nut

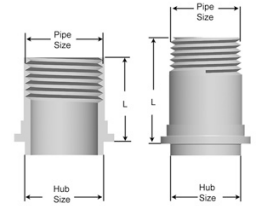
1-1/4" (1" Pittsburgh) Connection Nut Washer



(same as 1A connection nut washer)

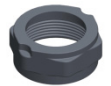
Part Number	Part Description
015650	1-1/4" connection nut washer

20 LT Swivels



Part Number	Part Description
063095	20 LT x 1M black swivel
063092	20 LT x 1M black, insulated swivel
063096	20 LT x 1M galvanized swivel
063094	20 LT x 1M galvanized, insulated swivel
063091	20 LT x 1M galvanized swivel with plug
013216	20 LT x 3/4M galvanized swivel
013217	20 LT x 3/4M galvanized, insulated swivel
013241	20 LT x 3/4F galvanized swivel
013240	20 LT x 3/4F galvanized, insulated swivel
063095	20 LT x 1M black swivel

20 LT Connection Nut



Part Number	Part Description
063415	20 LT black connection nut
063417	20 LT galvanized connection nut

20 LT Connection Nut Washer



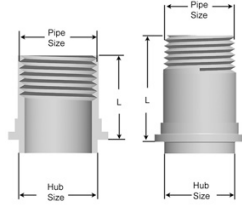
Part Number	Part Description
015664	20 LT connection nut washer

20 LT Connection Nut Tin

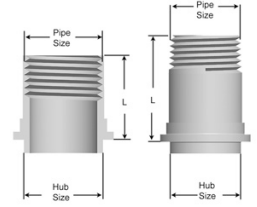


Part Number	Part Description
015640	20 LT connection nut tin

30 LT Swivels



45 LT Swivels



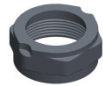
Part Number	Part Description
013130	30 LT x 1-1/4 M black swivel
013225	30 LT x 1-1/4M black, insulated swivel
013131	30 LT x 1-1/4M galvanized swivel
013226	30 LT x 1-1/4M galvanized, insulated swivel
013136	30 LT x 1-1/4M galvanized swivel with plug

Part Number	Part Description
033235	45 LT x 1-1/2M Black swivel
033251	45 LT x 1-1/2M Black, insulated swivel
033113	45 LT x 1-1/2M Galvanized swivel
033114	45 LT x 1-1/2M Galvanized, insulated swivel
033127	45 LT x 1-1/4F PLTD swivel

30 LT Connection Nut



45 LT Connection Nut



Part Number	Part Description
013401	30 LT black connection nut
013405	30 LT galvanized connection nut

Part Number	Part Description
033417	45 LT Black connection nut
033401	45 LT Galvanized connection nut

30 LT Connection Nut Washer



45 LT Connection Nut Washer



Part Number	Part Description
015657	30 LT connection nut washer

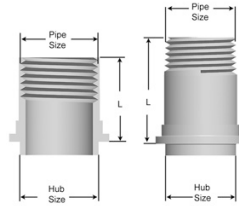
Part Number	Part Description
035656	45 LT Connection nut washer

30 LT Connection Nut Tin

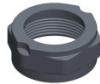


Part Number	Part Description
015643	30 LT connection nut tin

#3 Sprague (#4) Swivels



Part Number	Part Description
033110	#3 Sprague (#4) x 1-1/2 M black swivel
033111	#3 Sprague (#4) x 1-1/2 M galvanized swivel
033234	#3 Sprague (#4) x 1-1/2 M galvanized, insulated swivel
033128	#3 Sprague (#4) x 1-1/2 M galvanized, insulated with plug



#3 Sprague (#4) Connection Nut

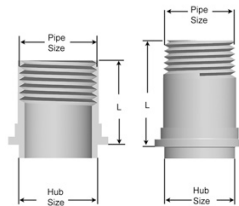
Part Number	Part Description
030692	#3 Sprague (#4) Black connection nut
033403	#3 Sprague (#4) Galvanized connection nut

#3 Sprague (#4) Connection Nut Washer



Part Number	Part Description
035650	#3 Sprague (#4) Connection nut washer

#5 Swivels



Part Number	Part Description
053100	#5 x 2F M.I. Black swivel
053102	#5 x 2F Plated swivel
053230	#5 x 2F Plated, insulated swivel



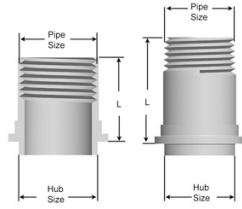
#5 Connection Nut

Part Number	Part Description
050692	#5 Standard black connection nut
053403	#5 Standard galvanized connection nut

#5 Connection Nut Washer

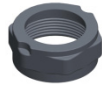


Part Number	Part Description
055650	#5 Connection nut washer



100 LT Swivels

Part Number	Part Description
053094	100 LT x 2M galvanized swivel
053095	100 LT x 2M insulated swivel



100 LT Connection Nut

Part Number	Part Description
053416	100 LT Galvanized connection nut



100 LT Connection Nut Washer

Part Number	Part Description
055621	100 LT Connection nut washer

Itron is a registered trademark of Itron, Inc. © 2015-2016 Itron, Inc. All rights reserved
Contact • Itron, Inc., Gas Metering, U.S. 970 Hwy. 127 North, Owenton, Kentucky 40359-9302 USA
Toll free: 1-877-487-6602 26 September 2016