



MIDI® 70V HP Fuse

## MIDI® High Performance Fuse Rated 70V

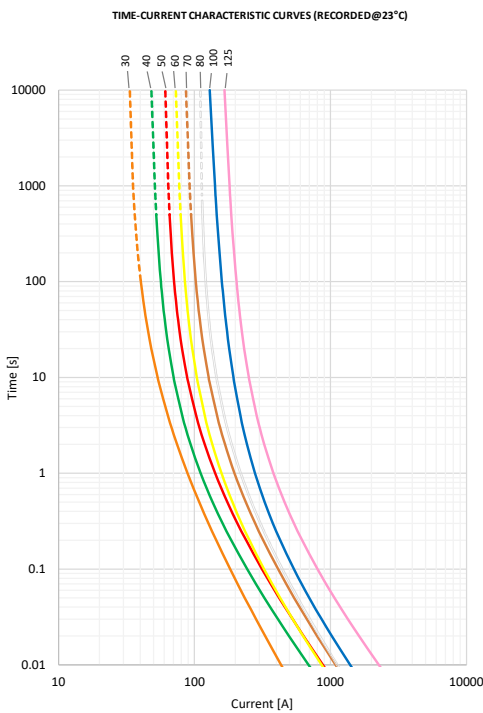
The MIDI® 70V High Performance (HP) Fuse is designed for high current circuit protection up to 125A with "Diffusion Pill Technology." The MIDI® 70V HP features 1MΩ Open State Resistance after fuse opening to guarantee safe interruption at any voltage up to 70V. The MIDI® 70V HP Fuse is an ideal solution for any high current application like fans, heaters and high inrush peak loads. The new added 135% overload gate provides much better wire protection.

### Specifications

Voltage Rating:	70 VDC
Interrupting Rating:	2500A @ 70 VDC
Recommended Environmental Temperature:	-40°C to + 125°C
Terminals Material:	Tin Plated Copper
Housing Material:	PA66 GF25 FR (U.L. 94 Flammability rating – V0)
Mounting Torque M6:	9Nm+/-1Nm
Open State Resistance (after fuse opening)	>1MΩm
Refers To:	ISO 20934 - Type SF36
Complies With:	Standard UL 248-1 as a Special Purpose Fuse in UL File E71611 (from 60A to 100A only) and Directive 2011/65/EU.



## Time-Current Characteristic Curves



## Ordering Information

Part Number	Rating	Package Size	Bolt Hole Qty
4998xxx.M-M6	30 - 125	500	2
4998xxx.M-1M6	30 - 125	500	1
4998xxx.M-NH	30 - 125	500	0

## Time-Current Characteristics

% of Rating	Opening Time Min / Max (s)
100	360,000 / ∞
135	300 / 3,600
150	90 / 500
200	1 / 50
300	0.3 / 4
500	0.1 / 1
600	0.07 / 0.7

## Ratings

Part Number	Current Rating (A)	Color Code	Test Cable Size (mm <sup>2</sup> )	Typ. Voltage Drop (mV)	Typ. Cold Resistance (mΩ)	Typ. I <sup>2</sup> t (A <sup>2</sup> s)
4998030.M_	30	Orange	2.5	100	2.20	3,200
4998040.M_	40	Green	4	94	1.56	4,700
4998050.M_	50	Red	6	86	1.16	7,500
4998060.M_	60 <sup>1</sup>	Yellow	6	81	0.94	6,800
4998070.M_	70 <sup>1</sup>	Brown	10	76	0.74	10,900
4998080.M_	80 <sup>1</sup>	White	10	64	0.57	10,500
4998100.M_	100 <sup>1</sup>	Blue	10	68	0.44	18,300
4998125.M_	125	Pink	16	66	0.35	51,300

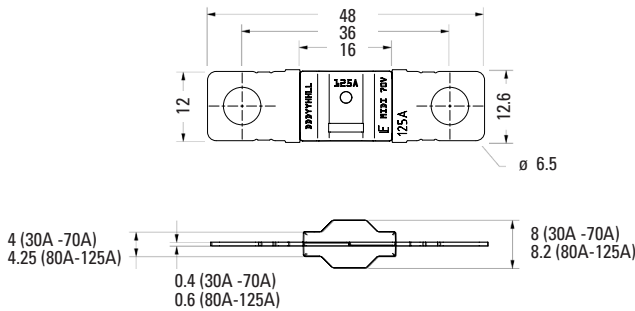
Note 1: UL Recognized.

The typical I<sup>2</sup>t is an average value calculated from the breaking capacity tests by using the melting time before the arcing occurs.

## MIDI® High Performance Fuse Rated 70V

### Dimensions

Dimensions in mm for reference only. See outline drawing for dimensions and tolerances.



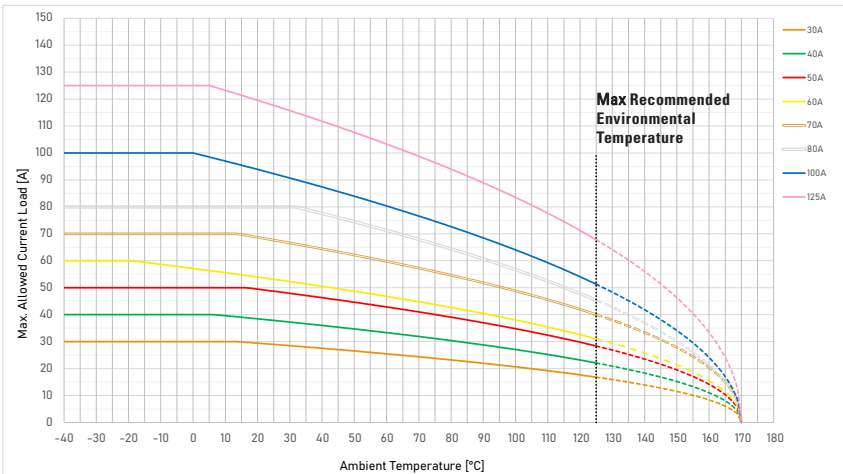
### Temperature Table

	max. allowed current load [A] at ambient temperature (typical derating)						
	-40°C	0°C	20°C	65°C	85°C	110°C	125°C
<b>30A</b>	30	30	29	25	23	19	17
<b>40A</b>	40	40	38	33	30	25	22
<b>50A</b>	50	50	49	42	38	32	28
<b>60A</b>	60	57	54	46	42	35	31
<b>70A</b>	70	70	69	59	53	46	40
<b>80A</b>	80	80	80	70	63	52	45
<b>100A</b>	100	100	94	78	71	59	51
<b>125A</b>	125	125	120	101	91	78	68

### Typical Derating of Fuse Melting Element

Temperature Security Margin is 20%

Please Contact Littelfuse® for Details Regarding Derating Test Set-Up



Derating curves may change depending on the final condition of the application (terminals characteristics, wire size etc.). Please ask Littelfuse for more information.