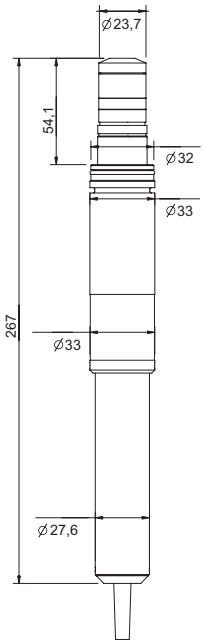


chlori::lyser

chlori::lyser™ monitors free chlorine (Cl₂ + HOCl + OCl⁻) or total chlorine (free chlorine + combined chlorine)

- s::can plug & measure
- measuring principle: amperometric (membrane covered)
- ideal for drinking water
- long term stable and lowest maintenance in operation
- replacement of membrane only once a year
- readings stable even at high fluctuations of pH, temperature and flow
- compensates fluctuations of pH in an unmatched way
 pH range from 4 to 10 FCI; pH range from 4 to 12 TCI (<5% per pH between 6 and 10/12 pH, <1% at <6 pH)
- low cross sensitivity to many surfactants
- cross sensitivities to chlorine dioxide, ozone can be compensated by using readings from spectro::lyser™
- factory precalibrated
- mounting and measurement in a flow cell
- operation via s::can terminals & s::can software
- plug connection or fixed cable



recommended accessories

| part number | article name |
|-----------------|---|
| C-1-010-sensor | 1 m connection cable for s::can physical and ISE probes |
| D-315-xxx | con::cube |
| D-319-xxx | con::lyte |
| F-12-sensor | carrier s::can physical probes |
| F-45-four | flow cell for four s::can physical probes |
| F-46-four-iscan | i::scan flow cell for up to 3 additional s::can probes |
| F-45-sensor | flow cell for s::can sensor |
| S-11-xx-moni | moni::tool Software |



technical specification

| | | | |
|--|--|-------------------------------|--|
| measuring principle | amperometric | interface to s::can terminals | sys plug (IP67), RS485 |
| measuring principle detail | potentiostatic 3-electrode system | cable length | 7.5 m fixed cable (-075) or plug connection (-000) |
| measuring range application | E-507-1: 0 ... 2 mg/L FCI E-507-2: 0 ... 10 mg/L FCI E-507-3: 0 ... 2 mg/L TCI E-507-4: 0 ... 10 mg/L TCI | housing material | PVC, stainless steel |
| resolution | 0.001 mg/l (for 10mg/l ... 0.01 mg/l) | weight (min.) | 300 g |
| automatic compensation instrument | temperature | dimensions (Ø x l) | 33 x 267 mm |
| automatic compensation cross sensitivities | pH | operating temperature | 0 ... 45 °C |
| response time | 2 min. | storage temperature | 0 ... 45 °C |
| integration via | con::cube con::lyte con::nect | operating pressure | 0 ... 1 bar |
| power supply | 9 ... 18 VDC | installation / mounting | flow cell |
| power consumption (typical) | 1.3 W | process connection | quick connect |
| power consumption (max.) | 1.5 W | flow velocity | 0.015 m/s (min.) 0.06 m/s (max.) |
| | | pH range | 4 ... 10 |
| | | conformity - EMC | EN 61326-1 |
| | | conformity - safety | EN 61010-1 |
| | | protection class (-000) | IP67 |
| | | protection class (-075) | IP68 |

drinking water

| | | concentration ranges and sensor/probe type for this application | | |
|---------------------|------|---|-----------------------|--------------------|
| | | free chlorine [mg/l] | total chlorine [mg/l] | part number |
| chlori::lyser (FCI) | min. | 0 | | E-507-1-000 / -075 |
| | max. | 2 | | |
| chlori::lyser (FCI) | min. | 0 | | E-507-2-000 / -075 |
| | max. | 10 | | |
| chlori::lyser (TCI) | min. | | 0 | E-507-3-000 / -075 |
| | max. | | 2 | |
| chlori::lyser (TCI) | min. | | 0 | E-507-4-000 / -075 |
| | max. | | 10 | |