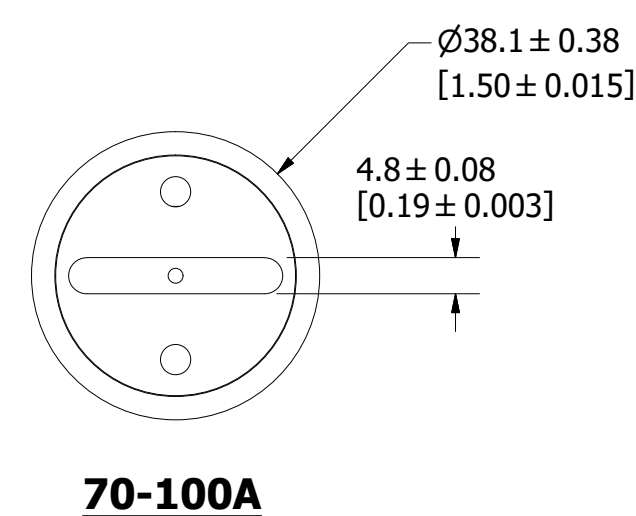
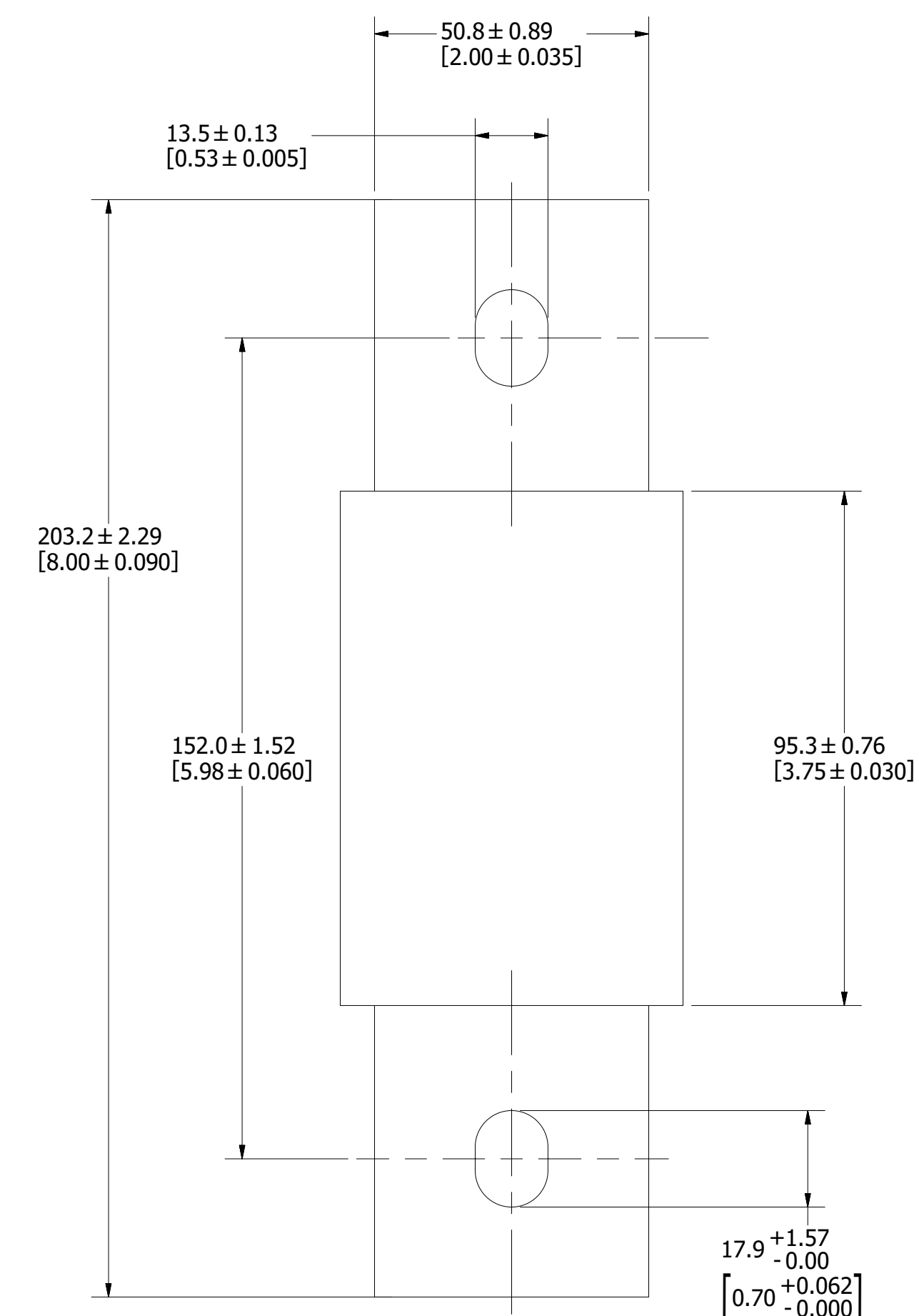
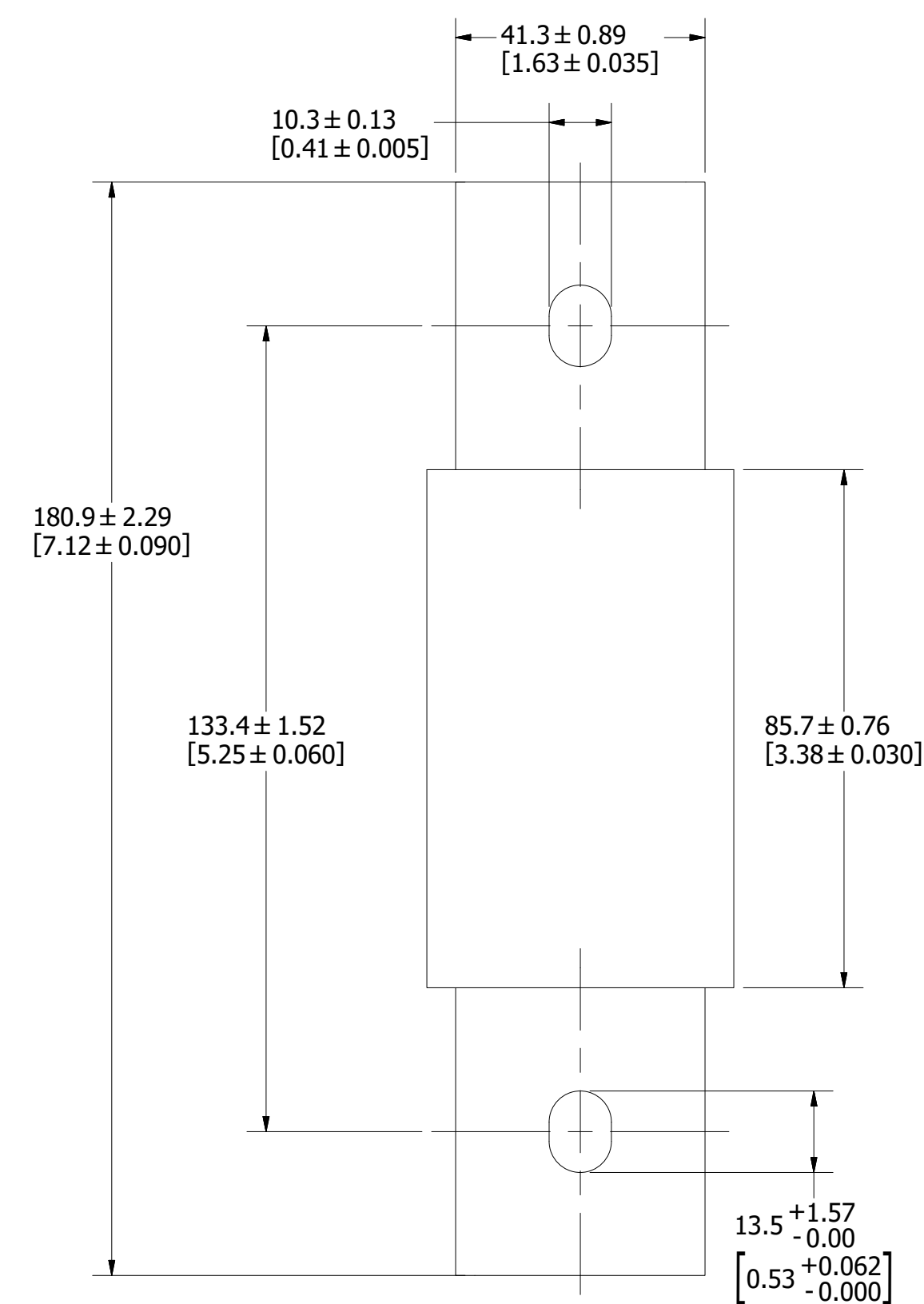
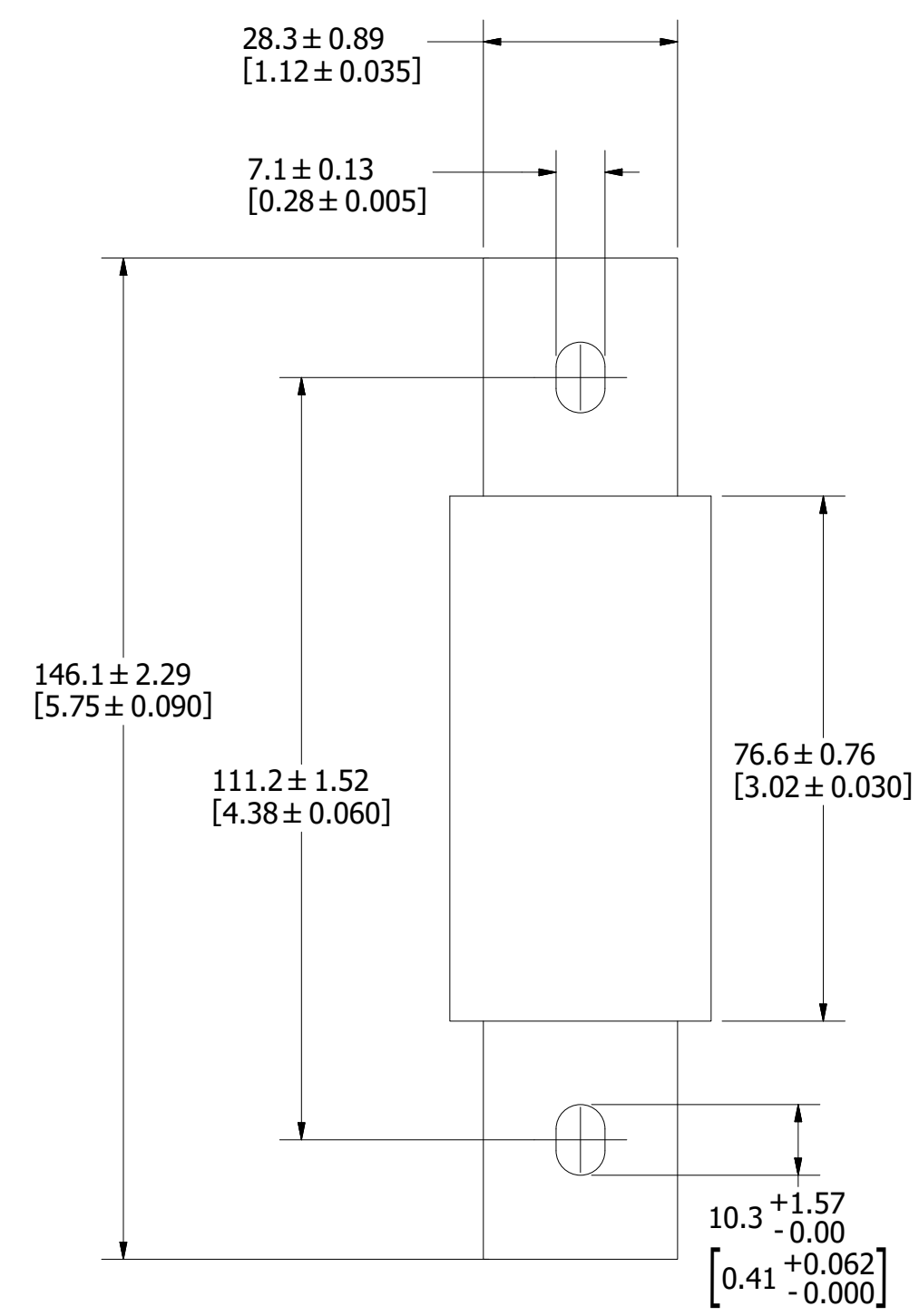
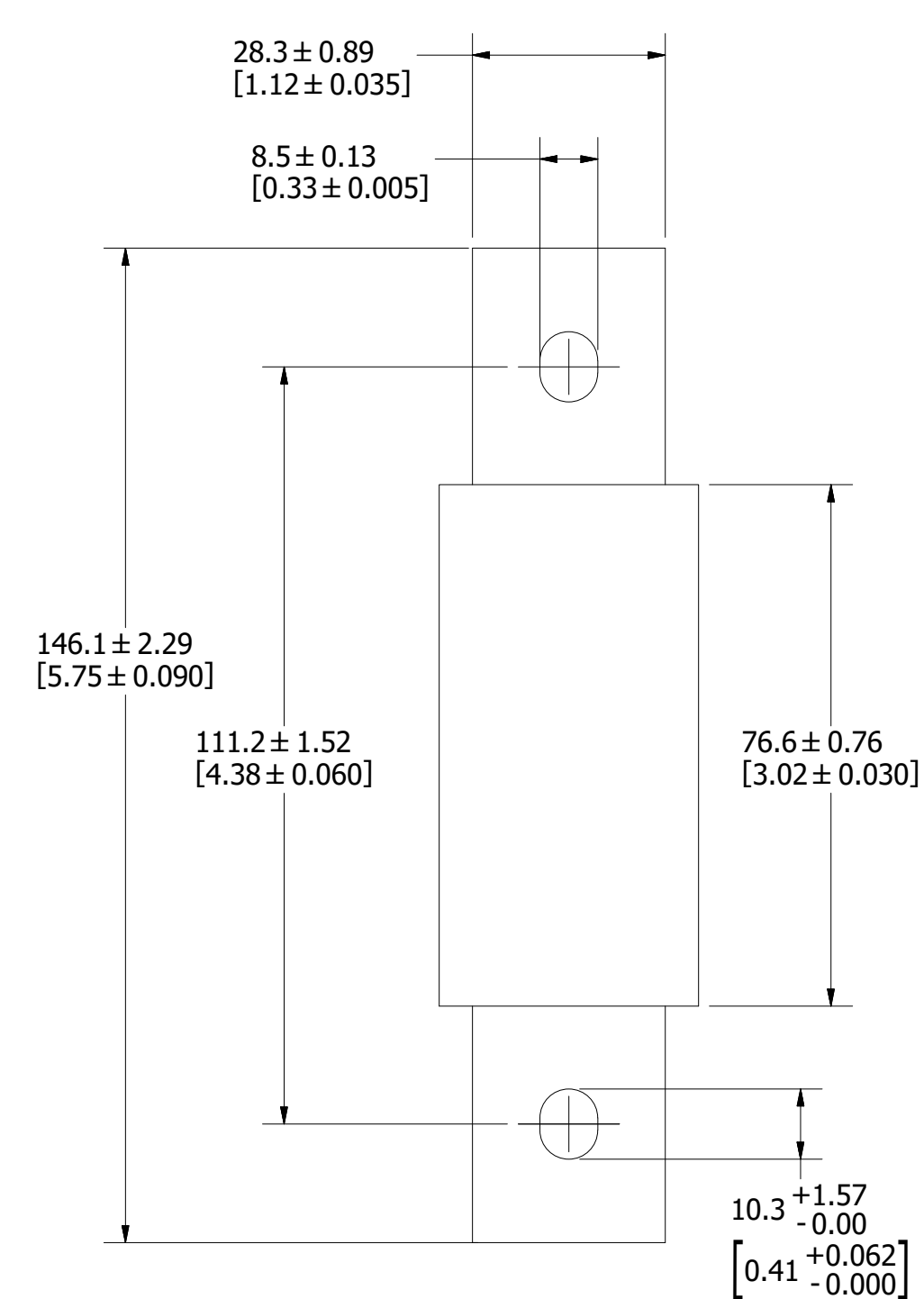
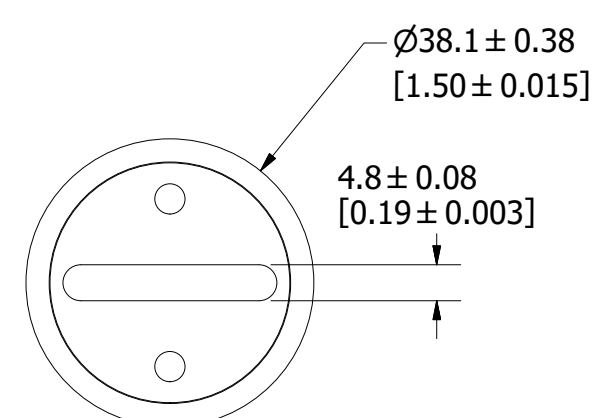


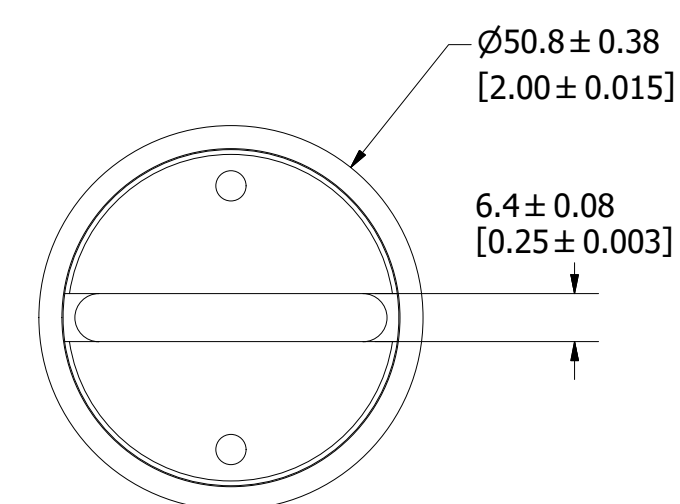
REV	DATE	DESCRIPTION
A	5/27/2011	50241SERP-RELEASE PER SALES RELEASE EM2220 & EM2222 MRY
B	5/23/2012	504983ECP/D - UPDATE OUTLINE DIMS -TY
C	9/26/2012	506225ECP/D - ADD 70-100A MRY
D	12/27/19	521792ECP/D - ADD TOLERANCES MRY



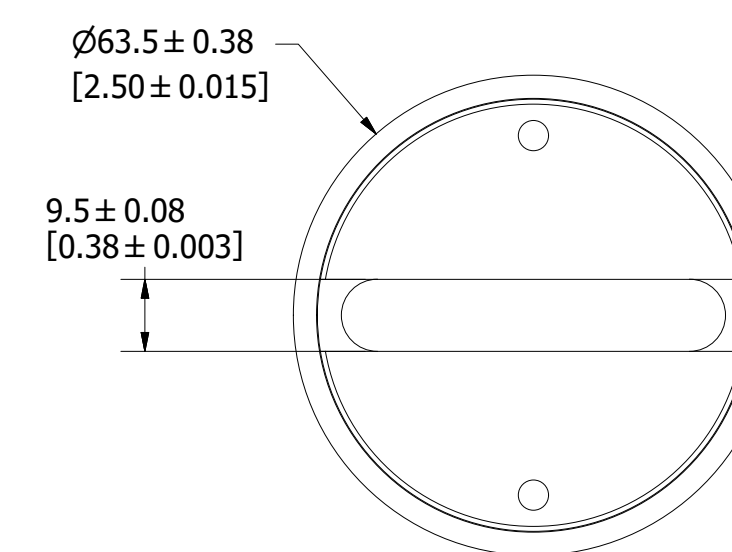
**70-100A**



**125-200A**



**250-400A**



**450A**

●	DENOTES CRITICAL CHARACTERISTICS.		
CPK	DENOTES CPK DIMENSIONS, -MINIMUM CPK VALUE		
(S)	DENOTES A CHARACTERISTIC THAT PROVIDES AN INDICATION OF PROCESS PERFORMANCE. PROCEDURE FOR MEASUREMENT AND TRACKING TO BE DEFINED IN LITTELFUSE INSPECTION INSTRUCTIONS.		
CP	DENOTES CP DIMENSIONS, -MINIMUM CP VALUE MUST BE WITHIN THE DIMENSIONAL LIMITATIONS SHOWN ON DRAWING AND INITIALLY LOCATED TO ALLOW FOR MAXIMUM TOOL LIFE.		
MATL SPEC	FINISH		
DRW MYORK	DATE 5/25/2011	SCALE NTS	FINISH GOOD WT GRAMS/PIECE
UNLESS OTHERWISE SPECIFIED, DIMENSIONS ARE IN MILLIMETERS, DIMENSIONS IN BRACKETS [ ] ARE INCHES DIMENSIONING AND DO NOT INCLUDE PLATING. TOLERANCING TO BE INTERPRETED IN ACCORDANCE WITH ANSI Y14.5M-1994			
3RD ANGLE PROJECTION			

TITLE		SPFJ 70 thru 450A	
	REVISION	DRWG NO.	SHEET 1 OF 1
	D	OL-SPFJ000	OUTLINE