



## I-250 Meter Parts List



This comprehensive catalog of diaphragm meter parts for Itron, Inc. contains parts for meters in current production. **All parts information and descriptions in this document are believed to be accurate, but are not guaranteed. Some parts may not be backward compatible with older versions of the product type.** For information about part numbers, descriptions or assemblies, contact Itron Support Services at 1-877-487-6602.

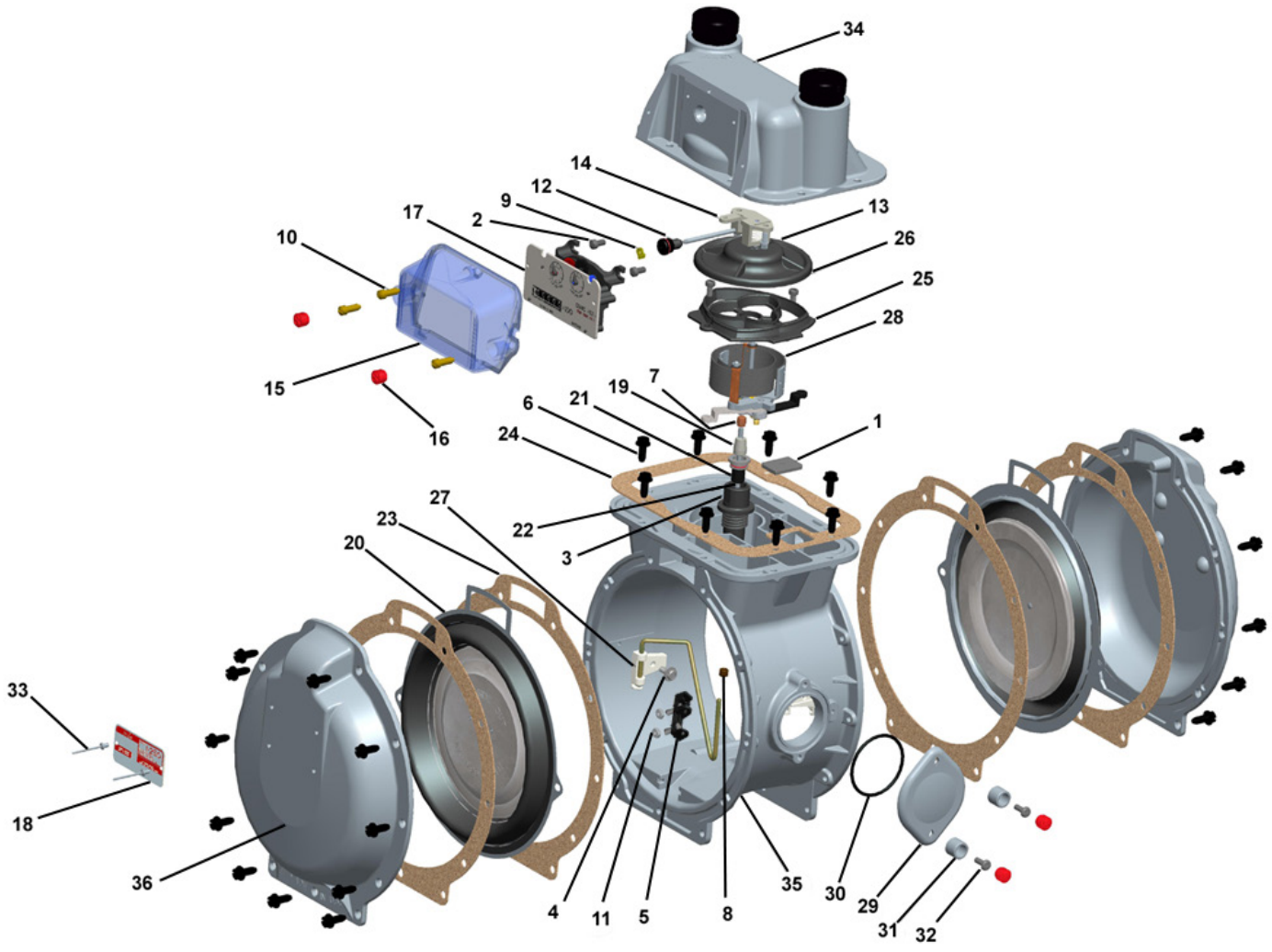
---

This parts list is effective September 2016.

## Contents

Center Casting .....	7
IDM Assembly .....	7
Meter Top Assembly 6" C to C .....	7
Seal Unit Assembly .....	7
Drive Dog .....	7
Diaphragm Bracket.....	7
Hand Hole Cover.....	7
Diaphragm Bracket Hex Nut.....	7
O-Ring, Hand Hole Cover.....	7
Side Cover.....	7
Diaphragm Assembly .....	7
Side Cover Gasket .....	7
Valve Seat .....	7
Valve Cover.....	7
Top Casting Gasket.....	7
Valve Cover Bearing .....	8
Ceiling Plate .....	8
Main Shaft .....	8
Tangent Adjustment Assembly.....	8
Thrust Bearing.....	8
Carrier Wire Assembly.....	8
Center Bracket Seal .....	8
Center Bracket .....	8
Center Bracket Lower Bearing .....	8
Badge.....	9
Security Seal Cup.....	9
Security Seal .....	9
Indexes.....	9
Index Covers .....	9
Screws.....	9
Special Tools.....	9
Meter Connections .....	10
10 LT Swivels .....	10
10 LT Connection Nut .....	10
10 LT Connection Nut Tin.....	10
10 LT Connection Nut Washer .....	10
#1 Sprague/1A Standard Swivels.....	10
#1 Sprague/1A Standard Connection Nut .....	10
#1 Sprague/1A Standard Connection Nut Washer.....	10
#1 Sprague/1A Standard Connection Blind Washer.....	10

1-1/4" (1" Pittsburgh) Swivels .....	11
1-1/4" (1" Pittsburgh) Connection Nut.....	11
1-1/4" (1" Pittsburgh) Connection Nut Washer .....	11
20 LT Swivels .....	11
20 LT Connection Nut .....	11
20 LT Connection Nut Washer .....	11
20 LT Connection Nut Tin.....	11
30 LT Swivels .....	11
30 LT Connection Nut Washer .....	11
30 LT Connection Nut Tin.....	12
30 LT Connection Nut .....	12



Item No.	Part No.	Qty	Description
1	010026-001	1	Ceiling plate
2	010040-002	4	Index mounting/valve seat screws
3	010065	1	Center bracket
4	010168	2	Carrier wire assembly screw
5	010189-001	1	Diaphragm bracket
6	010323-002	30	Case screw, hex head 1/4-20 x 5/8
7	010372-001	1	Valve cover bearing
8	010389	1	Center bracket lower bearing
9	010530	1	Drive dog
10	010625-002	3	Index cover screws
11	010820	2	Diaphragm bracket hex nut
12	010935	1	Seal unit assembly
13	015332-001	2	IDM mounting screw
14	015983	1	IDM assembly
15	016610	1	Index cover with RTV gasket
16	017167	4	Hand hole cover/ index security seal (red)
17			Index:
	017312		Standard 4-circle dial/clock (ft <sup>3</sup> ) NTC
	017316		Standard 4-circle dial/clock (ft <sup>3</sup> ) TC
	017321-001		Standard 5-digit direct read/odometer (ft <sup>3</sup> ) NTC
	017322-001		Standard 4-digit direct read/odometer (ft <sup>3</sup> ) NTC
	017323-001		Standard 5-digit direct read/odometer (ft <sup>3</sup> )TC
	017324-001		Standard 4-digit direct read/odometer (ft <sup>3</sup> ) TC
	017325-001		Standard 5-digit direct read/odometer (m <sup>3</sup> ) NTC
	017326-001		Standard 5-digit direct read/odometer (m <sup>3</sup> ) TC
	017289-001		2 PSI compensating, 14.73 PSIA base, 4-circle (ft <sup>3</sup> ) NTC & TC
	800027-014		Standard 7-digit direct read (m <sup>3</sup> ), TC
	800027-011		Standard 7-digit direct read (m <sup>3</sup> ), NTC
	18		
017788-001			NTC 5# MAOP (ft <sup>3</sup> )
017789-001			TC 5# MAOP (ft <sup>3</sup> )
017659-001			NTC 10# MAOP (ft <sup>3</sup> )
017658-001			TC 10# MAOP (ft <sup>3</sup> )
017824-001			NTC 35 kPa MAOP (m <sup>3</sup> )
017826-001			TC 35 kPa MAOP (m <sup>3</sup> )
017661-001			NTC 69 kPa MAOP (m <sup>3</sup> )
017660-001		TC 69 kPa MAOP (m <sup>3</sup> )	

Item No.	Part No.	Qty	Description
19	060087	1	Thrust bearing
20	060238	2	Diaphragm assembly
21	060490	1	Center bracket seal
22	060963-002	1	Main shaft
23	065270	4	Side cover gasket
24	065511-001	1	Top casting gasket
25	066044-002	1	Valve seat
26	067336-002	1	Valve cover
27	070176	1	Carrier wire assembly
28			Tangent crank assembly:
	090252	1	TC
	090250		NTC
29	091006SU	1	Hand hole cover
30	091007	1	O-ring hand hole cover
31	091061	2	Security Seal cup
32	091096	2	Hand hole cover screw
33	091444	2	Rivet 1/8 x .254 (4 required if customer badge)
34			Top case assembly, includes 6" center-to-center top, IDM assembly & hubs:
	109193	1	#1 Sprague/1A Standard
	109191		30 LT
	109190		20 LT
	109192		10 LT
	109194		1-1/4" (1" Pittsburgh)
	109195		ISO G 1-1/4" BSP
35	109254-002SU	1	Meter center casting with hand hole cover port
36	80002102SU	2	Side cover, 25 PSIG MAOP
	109210SU		Side cover, 10 PSIG MAOP

## Center Casting



Exploded view item number 35

Part Description	Part Number
Meter center casting with hand hole cover port	109254-002SU

## Meter Top Assembly 6" C to C



Assembly includes top casting, IDM, hubs

Exploded view item number 34

Part Description	Part Number
20 LT	109190
30 LT	109191
10 LT	109192
#1Sprague/1A Standard	109193
1-1/4 (1" Pittsburgh)	109194
ISO G1-1/4 BSP	109195

## Hand Hole Cover



Exploded view item number 29

Part Description	Part Number
Hand hole cover	091006SU
Hand hole cover, PFM, Pete's plug	091008-007
Hand hole cover, 1/8" pipe plug	091008-008

## O-Ring, Hand Hole Cover



Exploded view item number 30

Part Description	Part Number
O-Ring, hand hole cover	091007

## Side Cover



Exploded view item number 36

Part Description	Part Number
Meter side cover casting, 25 PSIG MAOP	80002102SU
Meter side cover casting, 10 PSIG MAOP	109210SU

## Side Cover Gasket



Exploded view item number 23

Part Description	Part Number
Side cover gasket, cork/Neoprene	065270

## Top Casting Gasket



Exploded view item number 24

Part Description	Part Number
Top casting gasket, cork/Neoprene	065511-001

## IDM Assembly



Exploded view item number 14

Part Description	Part Number
IDM assembly	015983

## Seal Unit Assembly



Exploded view item number 12

Part Description	Part Number
Seal unit assembly for slant face	010935

## Drive Dog



Exploded view item number 9

Part Description	Part Number
Drive dog (male)	010530

## Diaphragm Bracket



Exploded view item number 5

Part Description	Part Number
Diaphragm bracket	010189-001

## Diaphragm Bracket Hex Nut



Exploded view item number 11

Part Description	Part Number
6/32 Hex nut	010820

## Diaphragm Assembly



Exploded view item number 20

Part Description	Part Number
Meter diaphragm assembly	060238

## Valve Seat



Exploded view item number 25

Part Description	Part Number
Valve seat (lapped)	066044-002

## Valve Cover



Exploded view item number 26

Part Description	Part Number
Valve cover (lapped)	067336-002

### Valve Cover Bearing



Exploded view item number 7

Part Description	Part Number
Valve cover/main shaft interface bearing	010372-001

### Main Shaft



Exploded view item number 22

Part Description	Part Number
Main shaft	060963-002

### Thrust Bearing



Exploded view item number 19

Part Description	Part Number
Main shaft/center bracket seal interface assembly	060087

### Center Bracket Seal



Exploded view item number 21

Part Description	Part Number
Center bracket seal assembly	060490

### Center Bracket



Exploded view item number 3

Part Description	Part Number
Center bracket	010065

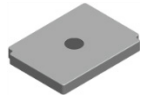
### Center Bracket Lower Bearing



Exploded view item number 8

Part Description	Part Number
Center bracket lower bearing	010389

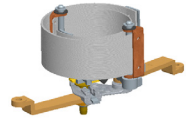
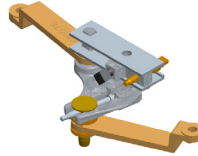
### Ceiling Plate



Exploded view item number 1

Part Description	Part Number
Ceiling plate	010026-001

### Tangent Adjustment Assembly



Exploded view item number 28

Part Description	Part Number
NTC adjustment mechanism assembly	090250
TC adjustment mechanism assembly	090252

### Carrier Wire Assembly



Exploded view item number 27

Part Description	Part Number
Carrier wire assembly	070176



## Badge



Exploded view item number 18

Part Description	Part Number
NTC 5# MAOP (ft <sup>3</sup> )	017788-001
TC 5# MAOP (ft <sup>3</sup> )	017789-001
NTC 10# MAOP (ft <sup>3</sup> )	017659-001
TC 10# MAOP (ft <sup>3</sup> )	017658-001
NTC 35 kPa MAOP (m <sup>3</sup> )	017824-001
TC 35 kPa MAOP (m <sup>3</sup> )	017826-001
NTC 69 kPa MAOP (m <sup>3</sup> )	017661-001
TC 69 kPa MAOP (m <sup>3</sup> )	017660-001
Customer badge (blank)	017034
Rivet 1/8 x .254 (exploded view 33)	091444

## Indexes



Exploded view item number 17

Part Description	Type	Part Number
Standard 4-circle dial/clock, (ft <sup>3</sup> )	NTC	017312
Standard 4-circle dial/clock, (ft <sup>3</sup> )	TC	017316
Standard 5-digit/direct read odometer (ft <sup>3</sup> )	NTC	017321-001
Standard 4-digit/direct read odometer (ft <sup>3</sup> )	NTC	017322-001
Standard 5-digit/direct read odometer (ft <sup>3</sup> )	TC	017323-001
Standard 4-digit/direct read odometer (ft <sup>3</sup> )	TC	017324-001
Standard 5-digit/direct read odometer m <sup>3</sup>	NTC	017325-001
Standard 5-digit/direct read odometer m <sup>3</sup>	TC	017326-001
2 PSI compensating, 4-circle, (ft <sup>3</sup> )	NTC & TC	017289
2 PSI compensating, 14.73 PSIA base, 4-circle, (ft <sup>3</sup> )	NTC & TC	017289-001
Standard 7-digit direct read (m <sup>3</sup> )	TC	800027-014
Standard 7-digit direct read (m <sup>3</sup> )	NTC	800027-011

## Special Tools



80003601 (80003601 end view) 012253

80010930

Part Description	Part Number
Adjustment wrench	80003601
IDM tool	012253
Prover plug	80010930

## Security Seal Cup



Exploded view item number 31

Part Description	Location	Part Number
Security seal cup	Hand hole cover	091061

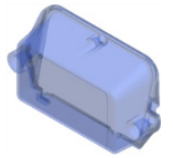
## Security Seal



Exploded view item number 16

Part Description	Location	Part Number
Security seal (red)	Hand hole cover and index	017167
Security seal (red)	Case	017156

## Index Covers



Exploded view item number 15

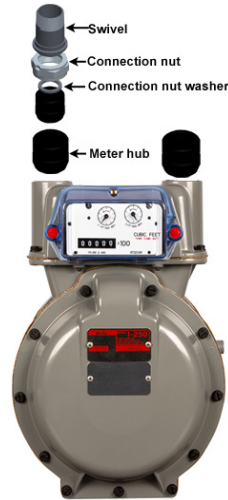
Part Description	Part Number
Index cover with boss and RTV (standard)	016610
Index cover without boss and RTV	015619

## Screws

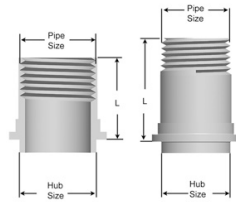
\*Exploded view item numbers 2, 4, 6, 10, 13, 32

Part Description	Quantity	Location	Part Number
1/4-20 x 5/8 hex head	30	Case screws, top casting, side covers (*6)	010323-002
10-24 x 1/2 slotted pan head	2	Hand hole cover (*32)	091096
10-24 x 3/8 Fillister head slotted	4	Index mounting, valve seat (2 each) (*2)	010040-002
10-24 x 5/8 head cross-slotted	3	Index cover (*10)	010625-002
10-24 x .775 cross-slotted	2	Itron AMR devices	010626-002
10-24 x 7/16 thread forming screw external Torx head	2	IDM housing (*13)	015332-001
Carrier wire assembly screw	2	Carrier wire assembly (*4)	010168

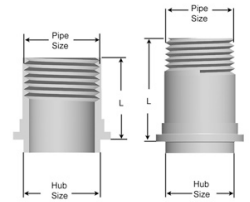
# Meter Connections



## 10 LT Swivels



## #1 Sprague/1A Standard Swivels



Part Number	Part Description
013322	10 LT x 3/4M galvanized swivel
013324	10 LT x 3/4M galvanized swivel with plug
013243	10 LT x 3/4M galvanized, insulated swivel

Part Number	Part Description
013110	#1 Sprague/1A Standard x 1M M.I.* black swivel
013132	#1 Sprague/1A Standard x 1M black swivel with plug
013247	#1 Sprague/1A Standard x 1M black, insulated swivel
013147	#1 Sprague/1A Standard x 1M black insulated swivel with plug
013111	#1 Sprague/1A Standard x 1M galvanized swivel
013114	#1 Sprague/1A Standard x 3/4 MI black swivel
013129	#1 Sprague/1A Standard x 1M galvanized swivel with plug
013223	#1 Sprague/1A Standard x 1M galvanized, insulated swivel
013145	#1 Sprague/1A Standard x 1M galvanized, insulated swivel with plug
013107	#1 Sprague/1A Standard x 3/4F galvanized swivel
013205	#1 Sprague/1A Standard x 3/4F galvanized, insulated swivel
013215	#1 Sprague/1A Standard x 3/4 galvanized insulated swivel

## 10 LT Connection Nut



Part Number	Part Description
013409	10 LT galvanized connection nut

## 10 LT Connection Nut Tin



Part Number	Part Description
010642	10 LT connection nut tin

## 10 LT Connection Nut Washer



Part Number	Part Description
015660	10 LT connection nut washer

## #1 Sprague/1A Standard Connection Nut



Part Number	Part Description
010692	#1 Sprague/1A Standard black connection nut
013403	#1 Sprague/1A Standard galvanized connection nut

## #1 Sprague/1A Standard Connection Nut Washer



Part Number	Part Description
015650	#1 Sprague/1A Standard connection nut washer

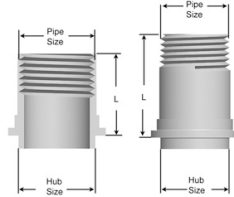
## #1 Sprague/1A Standard Connection Blind Washer



Part Number	Part Description
015648	#1 Sprague/1A Standard blind washer

\*malleable iron

### 1-1/4" (1" Pittsburgh) Swivels



(same as 1A swivels)

Part Number	Part Description
013110	#1 Sprague/1A Standard x 1M M.I.* black swivel
013132	#1 Sprague/1A Standard x 1M black swivel with plug
013247	#1 Sprague/1A Standard x 1M black, insulated swivel
013147	#1 Sprague/1A Standard x 1M black insulated swivel with plug
013111	#1 Sprague/1A Standard x 1M galvanized swivel
013129	#1 Sprague/1A Standard x 1M galvanized swivel with plug
013223	#1 Sprague/1A Standard x 1M galvanized, insulated swivel
013145	#1 Sprague/1A Standard x 1M galvanized, insulated swivel with plug
013107	#1 Sprague/1A Standard x 3/4F galvanized swivel
013205	#1 Sprague/1A896 Standard x 3/4F galvanized, insulated swivel
013215	#1 Sprague/1A Standard x 3/4 galvanized insulated swivel

\*malleable iron

### 1-1/4" (1" Pittsburgh) Connection Nut



Part Number	Part Description
013412	1-1/4" black connection nut
013414	1-1/4" galvanized connection nut
013402	1-1/4" plated connection nut

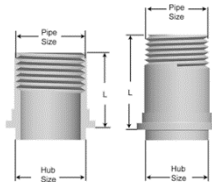
### 1-1/4" (1" Pittsburgh) Connection Nut Washer



(same as 1A connection nut washer)

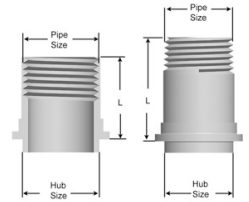
Part Number	Part Description
015660	1-1/4" connection nut washer

### 30 LT Swivels



Part Number	Part Description
013130	30 LT x 1-1/4 M black swivel
013225	30 LT x 1-1/4M black, insulated swivel
013131	30 LT x 1-1/4M galvanized swivel
013226	30 LT x 1-1/4M galvanized, insulated swivel
013136	30 LT x 1-1/4M galvanized swivel with plug

### 20 LT Swivels



Part Number	Part Description
063095	20 LT x 1M black swivel
063092	20 LT x 1M black, insulated swivel
063096	20 LT x 1M galvanized swivel
063094	20 LT x 1M galvanized, insulated swivel
063091	20 LT x 1M galvanized swivel with plug
013216	20 LT x 3/4M galvanized swivel with plug
013217	20 LT x 3/4M galvanized, insulated swivel with plug
013241	20 LT x 3/4F galvanized swivel
013240	20 LT x 3/4F galvanized, insulated swivel
063095	20 LT x 1M black swivel

### 20 LT Connection Nut



Part Number	Part Description
063415	20 LT black connection nut
063417	20 LT galvanized connection nut

### 20 LT Connection Nut Washer



Part Number	Part Description
015664	20 LT connection nut washer

### 20 LT Connection Nut Tin



Part Number	Part Description
015640	20 LT connection nut tin

### 30 LT Connection Nut Washer



Part Number	Part Description
015657	30 LT connection nut washer

### 30 LT Connection Nut



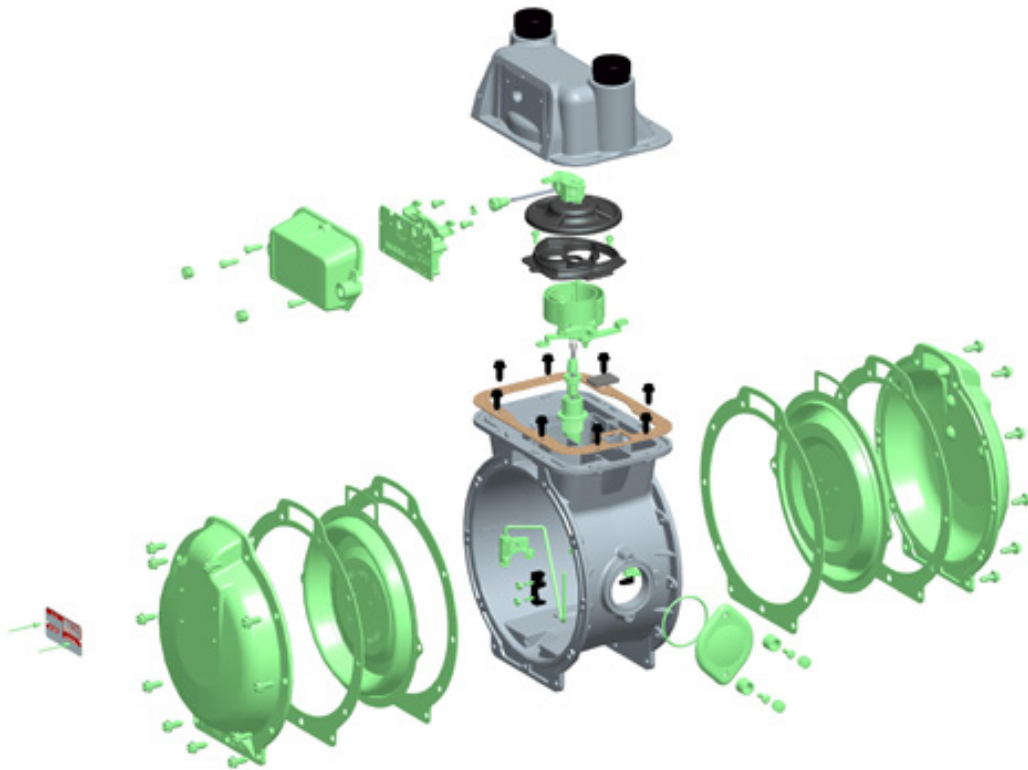
Part Number	Part Description
013401	30 LT black connection nut
013405	30 LT galvanized connection nut

### 30 LT Connection Nut Tin



Part Number	Part Description
015643	30 LT connection nut tin

### I-250 and 400A Parts Commonality



Notes Parts shaded in green are common between the I-250 and 400A meters.  
Parts that are not shaded in green are unique to the I-250 meter.

Itron is a registered trademark of Itron, Inc. © 2014-2016 Itron, Inc. All rights reserved  
Contact • Itron, Inc., Gas Metering - U.S., 970 Hwy. 127 North, Owenton, Kentucky 40359-9302 USA  
Toll free: 1-877-487-6602 26 September 2016