



Mebane Operations: Simpler. Smarter. Faster.

GE's new Mebane Customer Experience Center brings collaboration, product development and manufacturing to a new level.

A World-class Facility

GE's Carolina Star-certified Mebane facility is focused on Advanced Manufacturing and Lean processes. The enhanced **400,000** square-foot facility features:

- **~360,000** square feet of floor space for manufacturing
- **~11,500** square feet of advanced, innovative laboratory space, including:
 - IEEE and IEC Product Accelerator Lab
 - IEEE and IEC Low-Voltage/Medium-Voltage Product Certification Lab
- **~30,000** square feet dedicated to office, global showroom and learning center
- **8** major product lines
- More than **500** employees

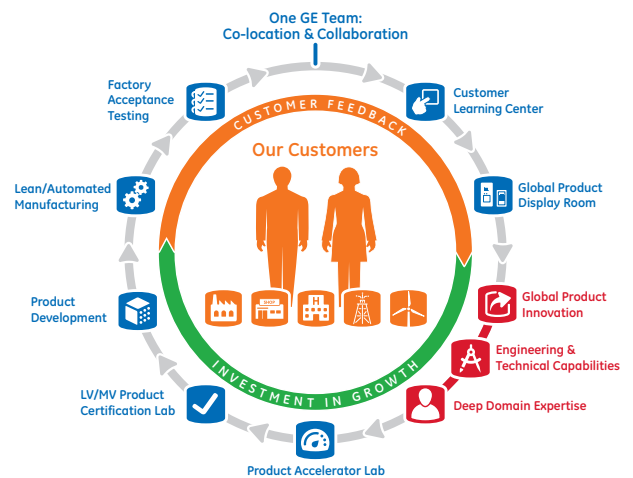
Co-location = Collaboration

In Mebane, teams with deep domain expertise are co-located and work together in an open, high-tech environment as one team to better serve customers. From new product design, manufacturing, sourcing, product management and engineering, the cross-functional team focuses on ways to improve customers' experience.

A Customer Destination for Collaboration and Discovery

Creating quality, customer-focused solutions is key to meeting market demands. This is why the expansion includes:

- **Interactive product showroom**, where customers can touch, see and feel products, and engage in technology development
- **Learning center**, for continuous training opportunities for new products and processes
- **Product Accelerator Lab**, providing opportunities for early input in the product development process
- **Product Certification Lab**, facilitating product compliance with speed and accuracy



Responding to Global Market Needs with Expanded Product Portfolio



Low-Voltage Motor Control Centers



Medium-Voltage Motor Control Centers



Lighting Panels



Switchboards



Power Panels



Automatic Transfer Switches



Electric Vehicle Supply Equipment



Controls



Commercial and Industrial End-User Customers

Driving Speed and Innovation Through Advanced Manufacturing

GE is laser-focused on investing in Advanced and Lean Manufacturing to create a quality and customer-centric culture. The factory also will utilize GE's Proficiency* Manufacturing Software to deliver critical production insight to optimize efficiency and accelerate production. Lean manufacturing is about eliminating waste, reducing cycle time and improving quality. GE has implemented lean manufacturing methodologies into the Mebane facility by investing in:

- **Digital fabrication** equipment
- **Dedicated fabrication** cells
- **Progressive build and moving lines** with integrated quality checks
- **Paint and plating lines**



**Lean
Manufacturing
in Action**

Progressive Build Lighting Panel Line

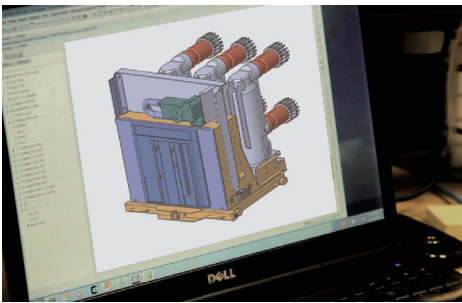
Enables
production
to run

90% faster
than previous cycle.

Speed & Accuracy

- Reduced production time from 12 hours to **less than one hour** to manufacture and ship
- **Increased** quality control
- Created a **problem-solving culture** based on continuous improvement

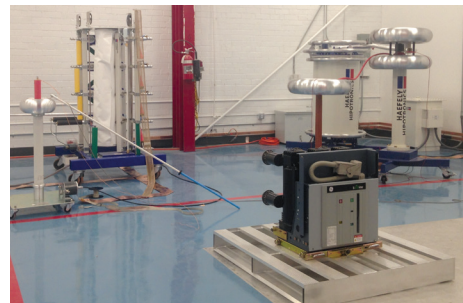
Accelerating Product Development and Testing



Product Accelerator Lab

By combining FastWorks methodologies with the Product Accelerator Lab, teams are able to work smarter to speed the pace of development. This approach enables the teams to:

- **Identify key customer needs** to generate insight throughout product development
- **Apply 3D modeling and simulation** for design concepts to explore, evaluate, test and prioritize designs early in the process
- **Incorporate additive manufacturing**, including new materials and open innovation
- **Use 3D printing and rapid prototyping** to quickly build and test prototypes for early customer feedback
- **Determine viability** using small scale in-market tests
- **Provide the advanced products** that customers need most



Product Certification Lab

World-class Testing and Third-party Certification

In-house advanced testing includes **UL, KEMA and TUV certification** capabilities, enabling a 30% reduction in product development cycle times and ongoing quality assurance.

Mebane's testing capabilities include:

- High current
- Partial discharge
- Lightning impulse
- Power frequency withstand
- Temperature rise
- Highly accelerated life
- Mechanical endurance
- Breaker analyzer

GE
Industrial Solutions
Mebane Operations
6801 Industrial Drive
Mebane, NC 27302

1-800-431-7867
www.geindustrial.com

*Trademark of GE Intelligent Platforms.

GE's Mebane Operations is a GE HealthAhead certified facility.