

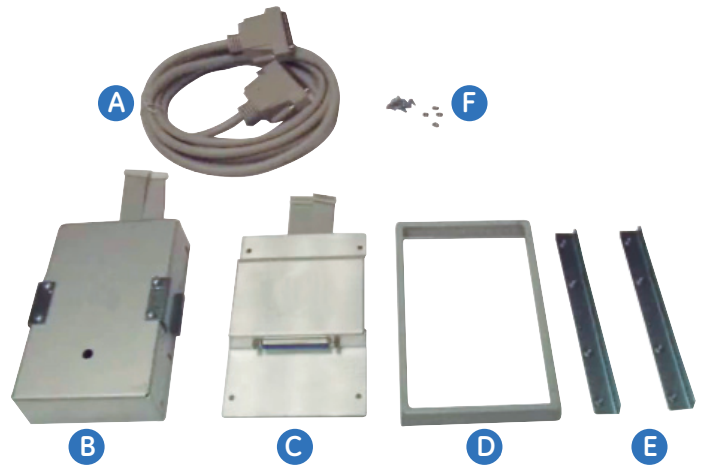
ASTAT-XT[®] Soft Starters Remote keypad installation

8 Amp to 72 Amp units (QT#0008 to QT#0072)

Product Number: QTAKPADKIT1

1. Kit components

- A** 3 meters cable with connectors
- B** Remote keypad box
- C** Soft starter dummy cover
- D** Remote keypad frame
- E** Remote keypad PCB holding brackets
- F** Screws M3x8 (8 pieces) and nuts M3 (4 pieces)



2. Recommended tools

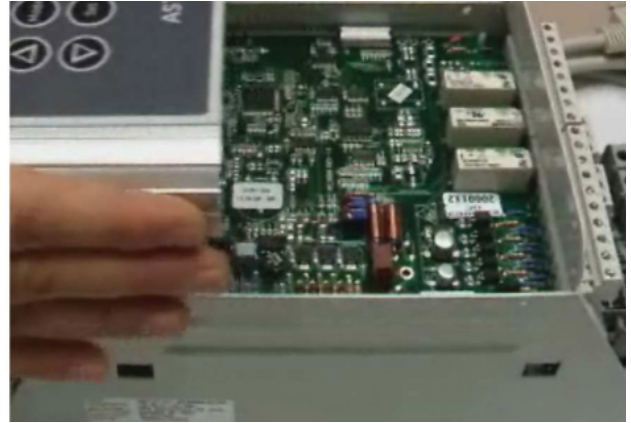
- Philips screw driver 2x125 mm
- Philips screw driver 1x100 mm
- 5.5 mm socket for M3 nut with a drive
- Flat cable connector extractor



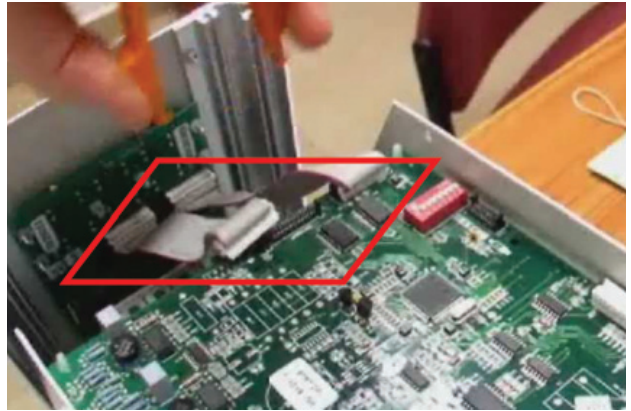
3. Remove 4 screws from side walls of the starter.



6. Remove the front cover and disconnect flat cable connections from main SMDP2000 and from keypad PCB2025.



4. Remove 4 screws from the starter bottom wall.



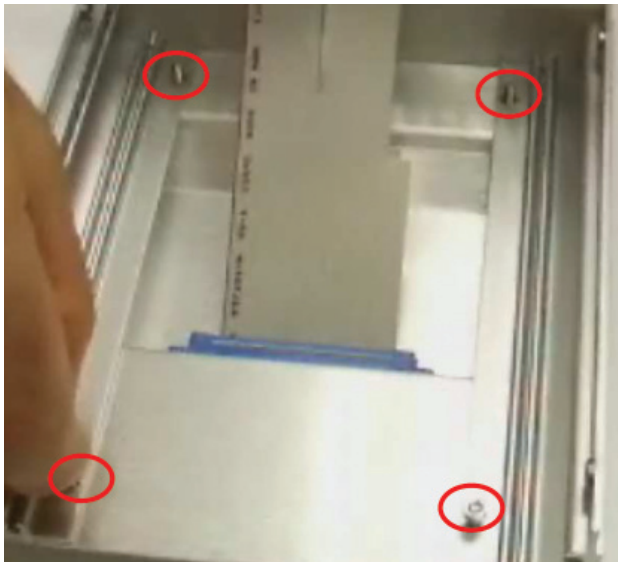
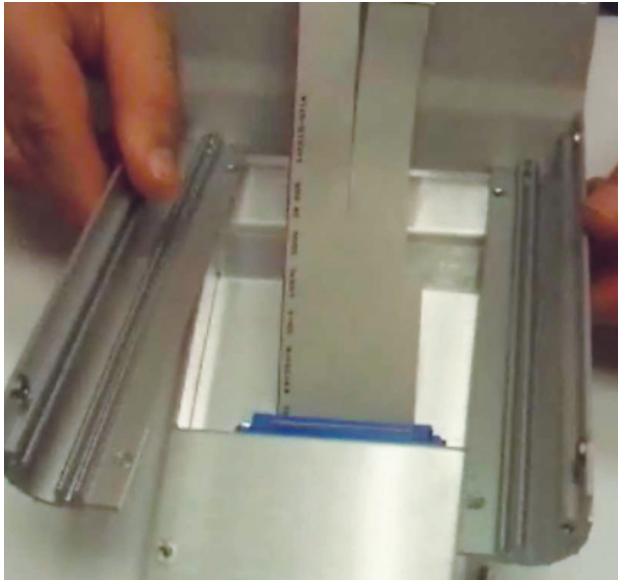
5. Remove 2 screws holding the cover to the heat sink.



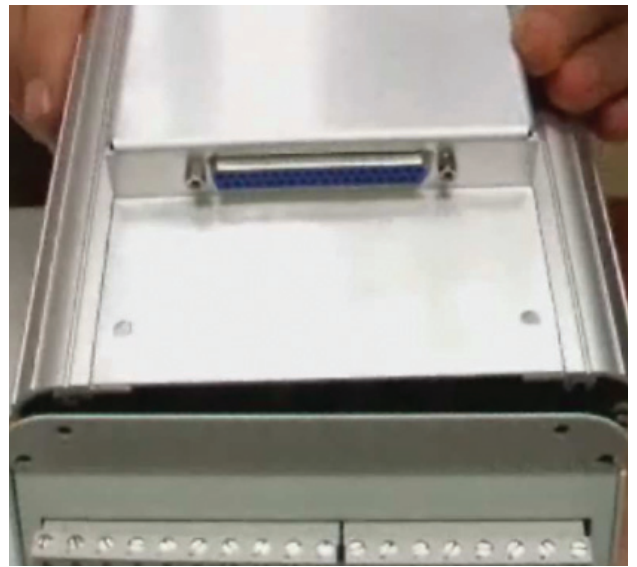
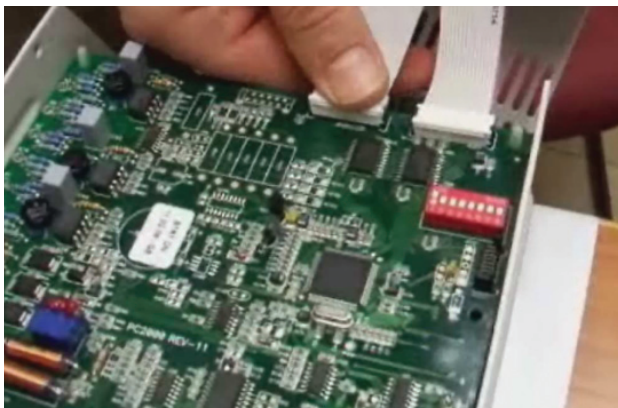
7. Dismantle 4 nuts holding front cover to soft starter frame.



8. Mount the dummy cover (Item C) to soft starter frame and fasten with 4 nuts.



9. Connect 2 flat cable connectors to SMDP2000 and install front cover back to place.



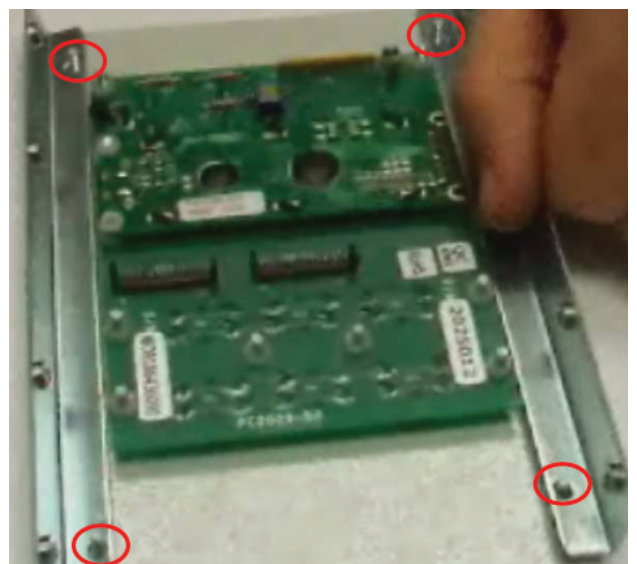
10. Fasten 2 screws that were loosened in Step 5.

11. Fasten 4 screws that were loosened in Step 3. Do not fully fasten the screws.

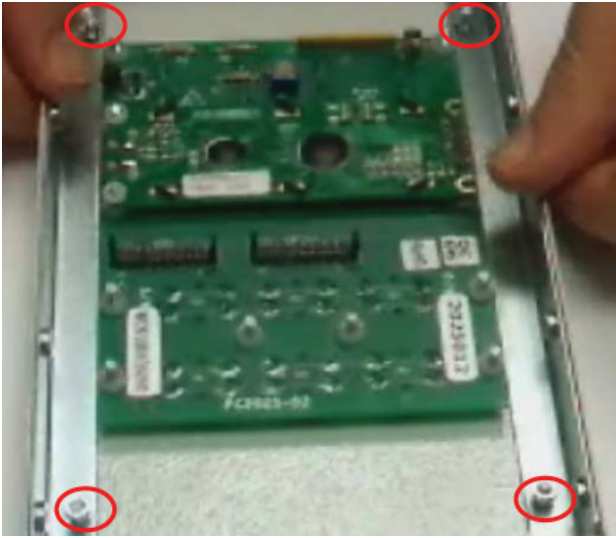
12. Fasten 4 screws that were loosened in Step 4. Install spring washers on the bottom screws.

13. Fully fasten 4 screws that were fastened in Step 11.

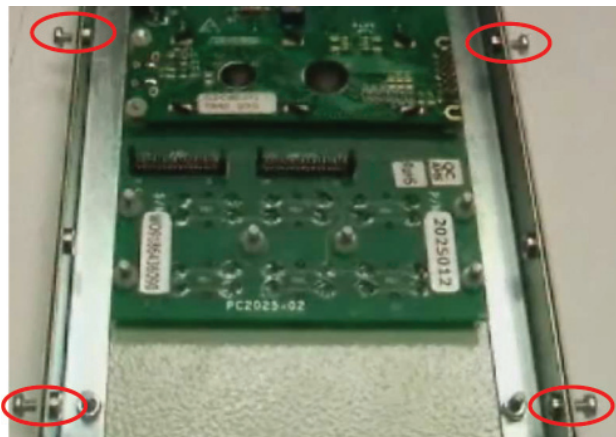
14. Put display unit in the holding brackets (Item E) and fasten it with 4 nuts.



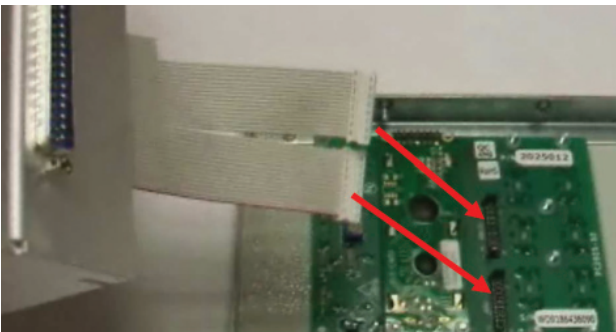
15. Put the front display unit with brackets in the remote keypad frame and fasten holding nuts.



16. Put and fully fasten 4 screws.



17. Connect 2 flat cable connectors from remote keypad box (Item B) to display unit.



18. Fasten 4 screws holding keypad unit to the box.



19. Install the power module and remote keypad and connect the cable. Connect cable (Item A) between control module and power module.

