

NELES® HIGH PERFORMANCE TRIPLE ECCENTRIC DISC VALVE, METAL SEATED, NELDISC® WITH FLOW BALANCING TRIM

FEATURES

- Excellent flow and control performance.
- Wide temperature range from -200 ... +600 °C / -330 ... +1110 °F.
- Reduced dynamic torque and noise.
- Mechanical and flow dynamic stability allows higher pressure drop service than a conventional disc.
- ASME 150/PN 20, ASME 300/PN 40 and ASME 600/PN 100.
- Sizes DN 80... 1500 / 3" ... 60".

NELDISC TRIPLE ECCENTRIC SEATING PRINCIPLE

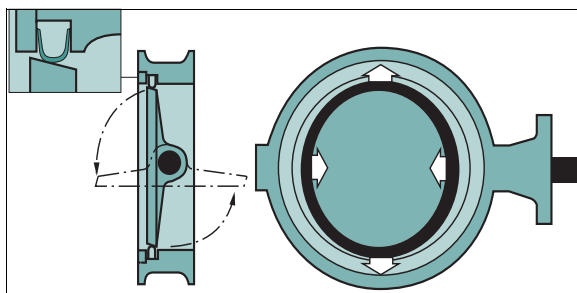


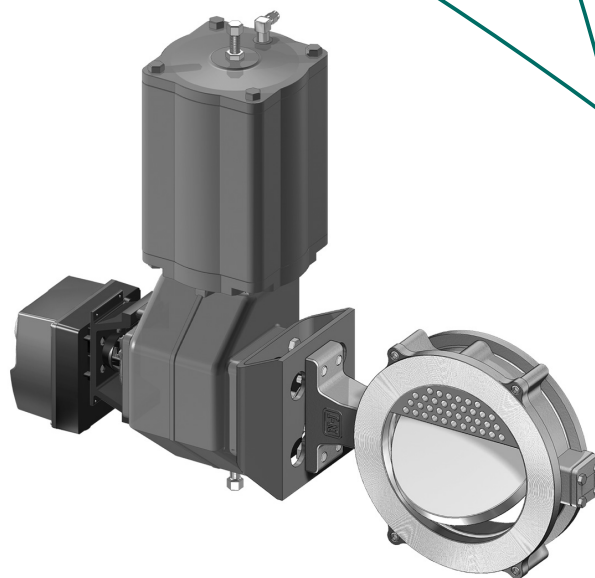
Figure 1 The principle of a seat ring construction.

The disc of the valve is machined to close tolerances to create an elliptical shape similar to an oblique slice taken from a solid metal cone. When the valve is closed, the elliptical disc at the major axis displaces the seat ring outward, causing it to contact the disc at the minor axis. When the valve is opened, the contact is released and the seat ring returns to its original circular shape.

CONTROL STABILITY AND SUPERIOR TIGHTNESS

The S-DISC® control valve unit provides outstanding control performance and excellent long-lasting tightness in the same valve. The very simple and robust construction guarantees long trouble-free operation and maximum reliability.

The S-DISC design consists of a standard NELDISC® triple eccentric disc valve equipped with a flow-balancing trim. The trim has been located on the downstream side of the valve body. The ingenious idea of this design is to transfer fluid forces out of the disc to the body. Figures 2 and 3 illustrate the flow treatments with a concentric-type con-



ventional butterfly valve compared to the S-DISC-design. The S-DISC design offers stable flow control and reduced dynamic torque, noise level and vibrations. The dynamic behaviour of the valve is very smooth and stable, which means less load on the shaft bearings, less required torque, smaller actuators and more economical control unit total costs. All of the excellent features of the standard NELDISC are available.

The most standard NELDISC can be easily modified to the S-DISC design, just by changing the flange ring.

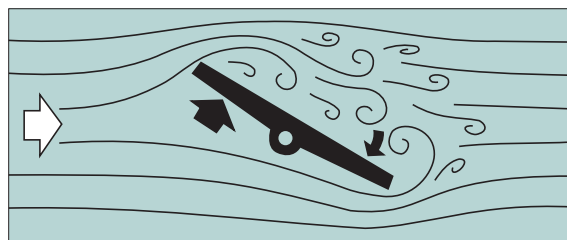


Figure 2 Conventional concentric-type valve flow treatment.

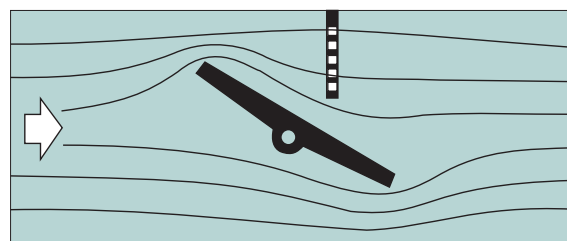


Figure 3 S-DISC flow treatment.

SIZING COEFFICIENTS

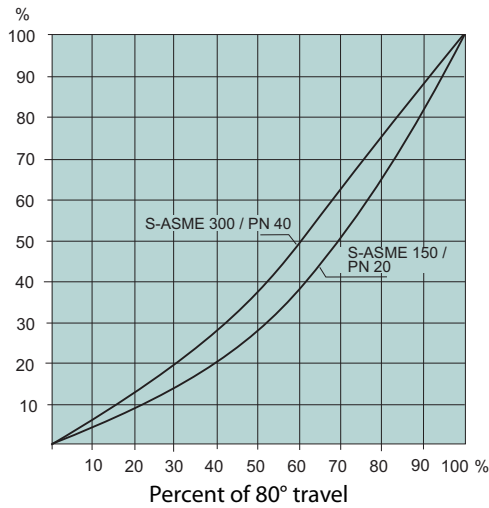


Figure 4 The graph of the relative C_v behavior of S-DISC triple eccentric disc valve.

The flow-balancing trim is designed so that the inherent flow characteristic is optimal, providing excellent controllability and accuracy while installed in the pipeline (figure 4).

Table 1 Max C_v at max dynamic torque. For L6 take account the disc reduction, see bulletin 2L621.

Valve size	ASME 150 / PN 20	ASME 300 / PN 40	ASME 600 / PN 100
mm inch	C_v max	C_v max	C_v max
80 3	150	150	-
100 4	265	265	-
125 5	490	-	-
150 6	790	640	322
200 8	1610	1100	488
250 10	2580	1640	978
300 12	3880	2630	1650
350 14	5610	3870	2205
400 16	7300	3870	3130
450 18	9330	5000	3940
500 20	11600	6600	5340
600 24	16500	7900	6470
700 28	20800	-	9370
750 30	-	-	9370
800 32	28500	-	13200
900 36	35100	-	13180
1000 40	43800	-	20180

SIZING

For larger sizes, consult factory.

Sizing of the S-DISC control valve is based on the ANSI/ISA S-75.01 standard.

We recommend use of the NELPROF® Selection Program available from Metso subsidiaries.

Metso Flow Control Inc.

Europe, Vanha Porvoontie 229, P.O. Box 304, FI-01301 VANTAA, Finland.
Tel. +358 20 483 150. Fax +358 20 483 151

North America, 44 Bowditch Drive, P.O. Box 8044, Shrewsbury, MA 01545, USA.
Tel. +1 508 852 0200. Fax +1 508 852 8172

South America, Av. Independência, 2500- Iporanga, 18087-101, Sorocaba-São Paulo, Brazil.
Tel. +55 15 2102 9700. Fax +55 15 2102 9748/49

Asia Pacific, Haw Par Centre #06-01, 180 Clemenceau Avenue, Singapore 239922.
Tel. +65 6511 1011. Fax +65 6250 0830

China, 11/F, China Youth Plaza, No.19 North Rd of East 3rd Ring Rd, Chaoyang District, Beijing 100020, China. Tel. +86 10 6566 6600. Fax +86 10 6566 2583.

Middle East, Roundabout 8, Unit AB-07, P.O. Box 17175, Jebel Ali Freezone, Dubai, United Arab Emirates. Tel. +971 4 883 6974. Fax +971 4 883 6836

www.metso.com/valves

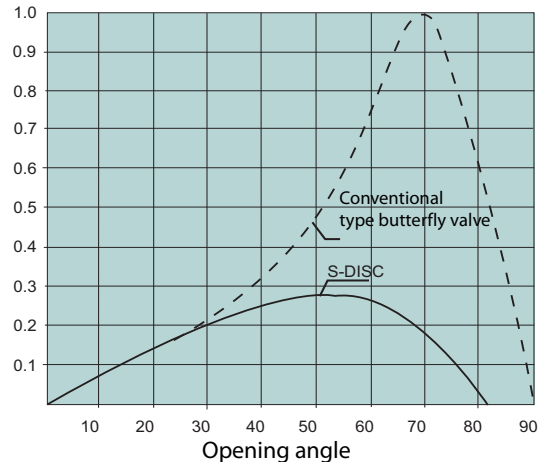


Figure 5 The comparison of the torque requirements of conventional and S-DISC equipped triple eccentric disc valve.

The S-DISC gives a very smooth and low dynamic torque, obtaining excellent flow and control stability (figure 5).

Table 2 Flow coefficients in control service at different openings.

Percent of opening	C_v/C_v max			F_L	Z	X_T
	ASME 150 / PN 20	ASME 300 / PN 40	ASME 600 / PN 100			
10	0.021	0.030	0.061	0.86	0.49	0.57
20	0.090	0.124	0.124	0.86	0.44	0.57
30	0.142	0.196	0.200	0.86	0.41	0.57
40	0.207	0.279	0.291	0.86	0.37	0.57
50	0.286	0.377	0.401	0.85	0.34	0.57
60	0.386	0.498	0.528	0.84	0.30	0.55
70	0.502	0.627	0.662	0.83	0.27	0.50
80	0.651	0.764	0.781	0.78	0.24	0.42
90	0.810	0.886	0.891	0.73	0.22	0.36
100	1.000	1.000	1.000	0.63	0.19	0.29

ENGINEERING DIMENSIONS

The engineering dimensions type coding and sizing of the actuators have been presented in Metso bulletins 2 LW 20, 2 L1 21, 2 L6 21.

The complete valve code should have a prefix S- for S-DISC control valves (e.g. S-LW 8 BA 10 ...).

Subject to change without prior notice.

